

LIFT CHAIR MOTOR REPLACEMENT INSTRUCTIONS

DRVMOTR1171 - MOTOR,SLAVE MOTOR,STANDARD 24V DC,USA,992.870.009

DRVMOTR1139 - MOTOR,MEGAMAT PLUS,992.870.002.2,(PAL 1.059 MOTOR)

DRVMOTR1308 - MOTOR,DELTA DRIVE,D13110,(OKIN: 3R011500G)

If you require any assistance with these instructions, please call **Pride Technical Service** at **1-877-800-1248**.
Canada providers, phone **1-888-570-1113**.

Tools needed:

- Hammer
- Pliers
- Flathead and Phillips-head screwdrivers

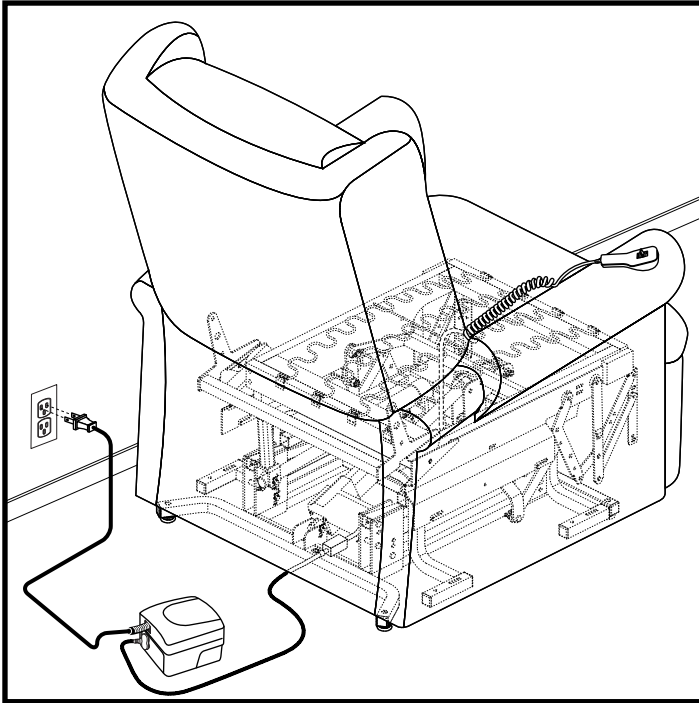
Installation instructions:

1. Make sure the lift chair is in the full upright position. Refer to the lift chair owner's manual.
2. Unplug the lift chair from the electrical outlet. See figure 1.
3. If the chair in question is **not** a KD lift chair, then go to step 6.
4. Pull the fabric cover away from the back of the lift chair, exposing the KD sleeves on either side of the frame. See figure 2.
5. Using a flathead screwdriver, pry up on the metal tabs while simultaneously lifting up on the seatback to disengage the KD clips and remove the seatback. See figure 2.
6. Turn the lift chair upside down.
7. Disconnect the electrical connections from the motor to be replaced. See figures 3 and 4.
8. Remove the cotter pins from the motor. Save the pins for future use. See figure 5.
9. Remove the clevis pin from the top of the motor, followed by the clevis pin from the bottom of the motor. Save the pins for future use. See figure 6.
10. Remove the motor from the lift frame.
11. Install the new motor.
12. Attach the bottom clevis pin (from step 9) to the bottom clevis and lift frame base. See figure 6.
13. Reinstall the bottom cotter pin (from step 8). See figure 5.
14. Reconnect the motor to the harnesses and/or electrical connections from step 7. See figures 3 and 4.
15. Place the lift chair in the full recline position. While the chair is reclined, attach the top clevis pin (from step 9) to the lift/recline bracket and motor top. Reinstall the top cotter pin (from step 8).

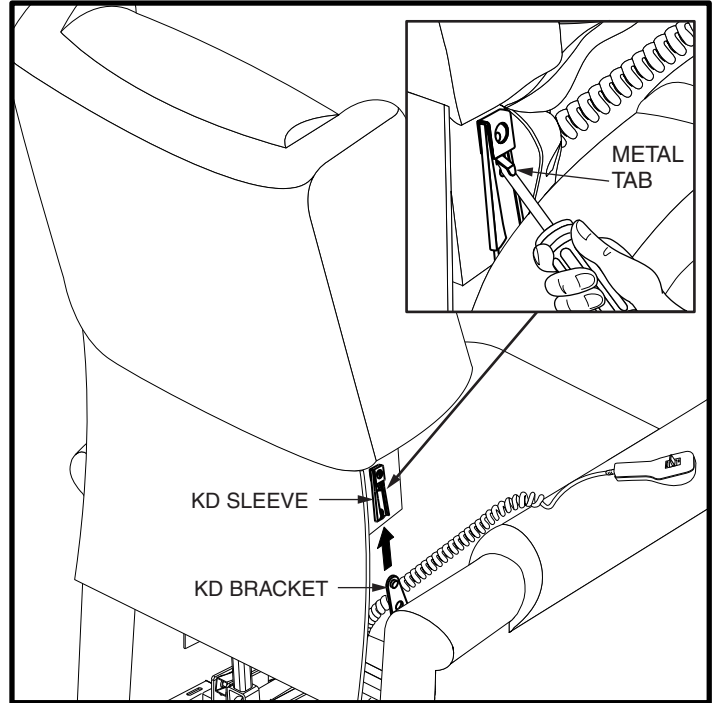
NOTE: If the new lift chair motor part number is DRVMOTR1308, then attach the top clevis pin to the T-bar/side bracket.

16. If needed, adjust the chair position with the hand control to ensure that the lift/recline bracket meets the top of the motor. (For infinite position motors, attach the top of one motor to the kidney bracket, and the top of the other motor to the lift/recline bracket.)
17. Return the lift chair to its full upright position.
18. If the back of the chair was removed in step 5, reattach it now, ensuring that the metal tabs fully engage the lower half of the KD bracket on both sides. See figure 2.
19. Fully test the lift chair to verify proper operation.

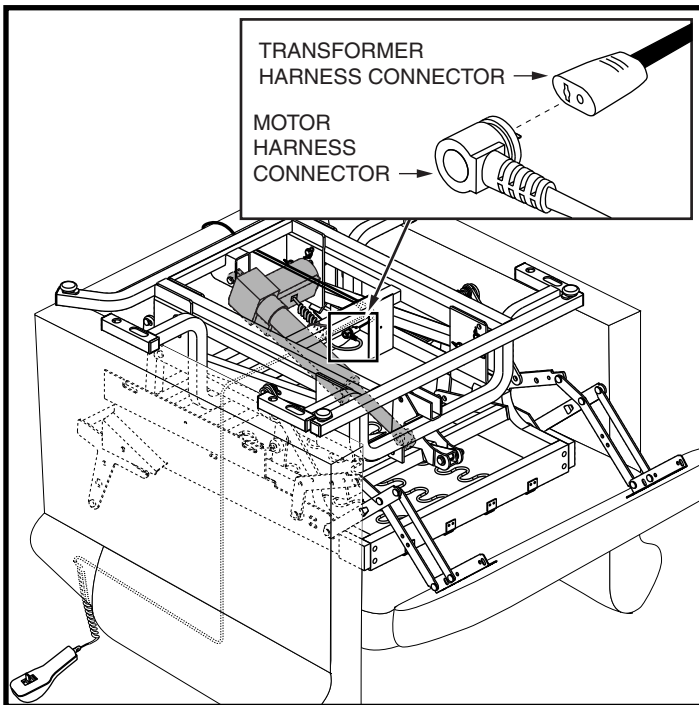
The replacement lift chair motor is now ready for use.



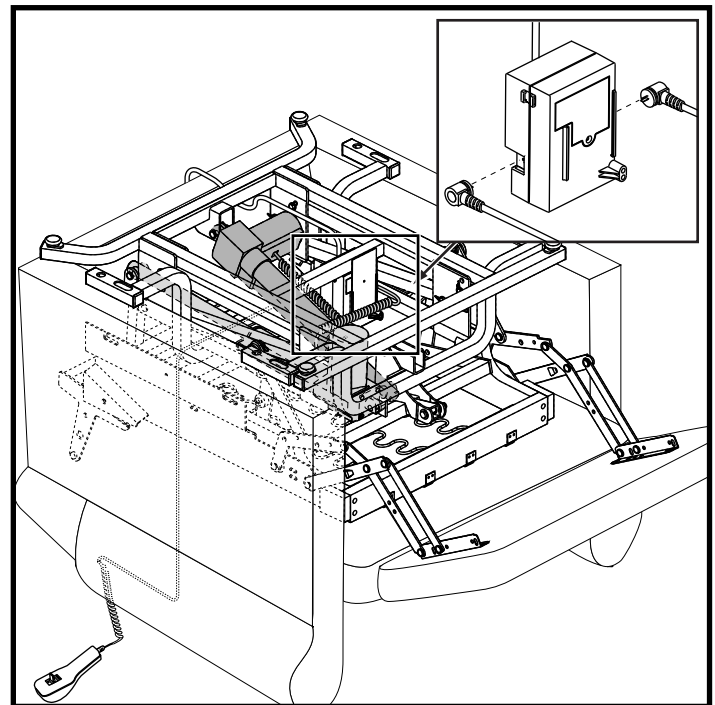
**Figure 1. Lift Chair Power Connection/
Disconnection**



**Figure 2. KD Lift Chair Seatback Removal/
Installation**



**Figure 3. Single Motor Harness Connection/
Disconnection**



**Figure 4. Infinite Motor Electronics Connection/
Disconnection**

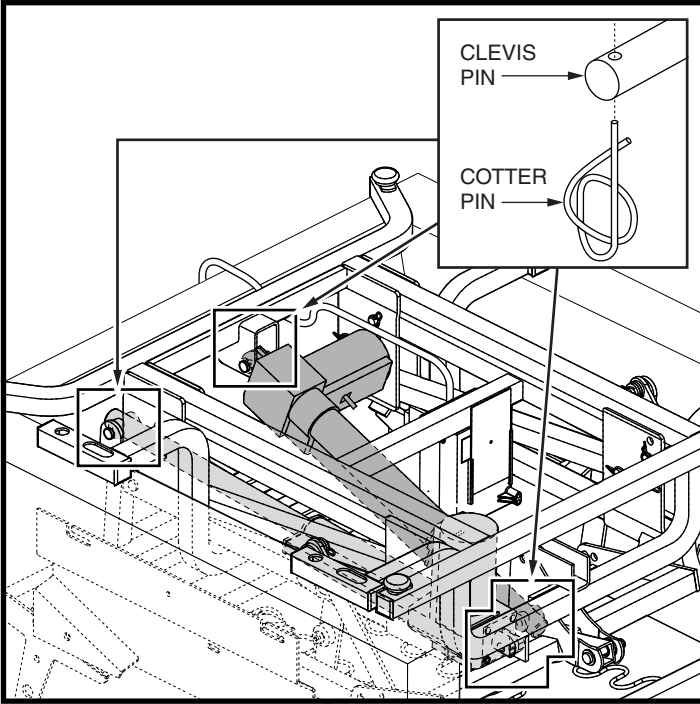


Figure 5. Cotter Pin Removal/Installation

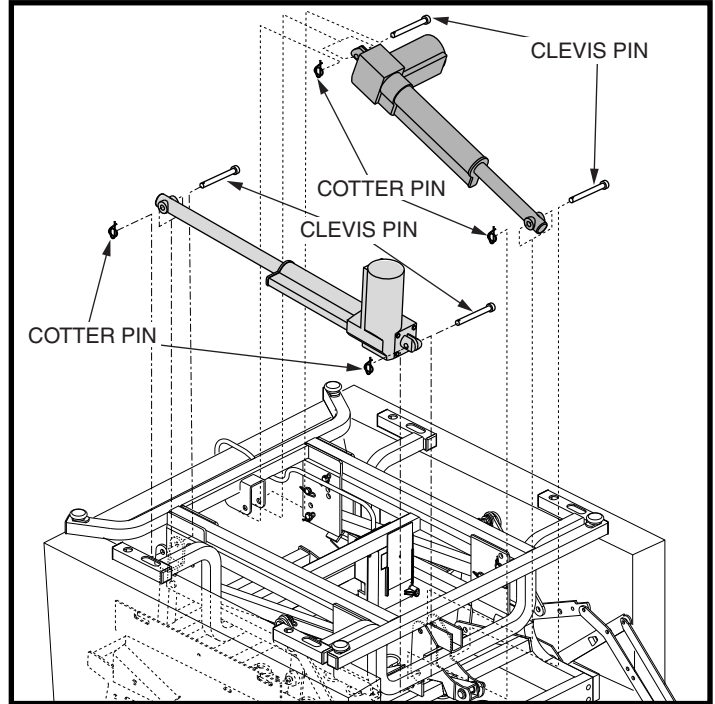


Figure 6. Motor Removal/Installation