

Model Number	SC54ALX
Weight Capacity	325 lb / 147 kg
Maximum Speed ²	4.8 mph / 7.1 km/h
Ground Clearance ⁴	1.39" at motor
Turning Radius ⁴	38.39"
Overall Length ⁴	42.48"
Overall Width ⁴	22.87"
Seat-to-Deck Height ⁴	16.18" - 17.72"
Seat-to-Ground Height ⁴	21.85" - 23.54"
Suspension	Full front and rear suspension
Tires ⁴	Front: 2"x 8" Rear: 2.5"x 8"
Range Per Charge ^{2,3}	16 Ah: 18 mi / 29 km at 200 lb / 91 kg 16 Ah: 13.6 mi / 21.9 km at 325 lb / 147.5 kg 8 Ah: 9 mi / 14.5 km at 200 lb / 91 kg 8 Ah: 6.8 mi / 11 km at 325 lb / 147.5 kg
Product Weight ⁴	83.2 lb / 37.78 kg without batteries
Heaviest Piece when Disassembled ⁴	35.2 lb / 16 kg
Standard Seating ⁴	Type: Mesh Back Material: Black Vinyl Dimensions: 17"x17" Weight: 22.4 lb / 10.2 kg
Motor Output	24-volt DC motor, sealed transaxle
Brakes	Regenerative and electromechanical
Battery Requirements	Type: Lithium battery box Size: 8 Ah* or 16 Ah**
Battery Weight ⁵	8 Ah*: 8 lb / 3.5 kg 16 Ah**: 12.2 lb / 5.5 kg
Battery Charger	Off-board 3.5 amp lithium battery charger
Warranty	Lifetime limited on frame; 2-year limited on electronics; 2-year limited on drivetrain 2-year limited on battery

- Pride® FDA Class II Medical Devices are designed to aid individuals with mobility impairments.
- Varies with user weight, terrain type, battery amp-hour (AH), battery charge, battery condition and tire condition. These specifications can be subject to a variance of (+/- 10%).
- Tested in accordance with ANSI/RESNA, WC Vol2, section 4 & ISO 7176-4 standards. Results derived from theoretical calculations based on battery specifications and drive system performance. Test conducted at maximum weight capacity.
- Due to manufacturing tolerances and continual product improvement, this specification can be subject to a variance of (+ or - 3%).
- Battery weight may vary based on manufacturer.



FDA Class II
Medical Device

GOGO® ENDURANCE AL+

Lightweight mobility plus
so much more



PRIDE MOBILITY®

pridemobility.ca



LIGHTWEIGHT
ALUMINUM
FRAME



UNRIVALED
TIGHT
TURNING



MAGNETIC
CHARGING



*Transport of this item on commercial aircraft is subject to federal regulations and airline policy. Please consult your airline prior to your flight to ensure your Go-Go® Endurance AL+ and its lithium ion battery are permitted.
**Batteries are not airline-compliant

NOTE: All specifications subject to change without notice. The information contained herein is correct at the time of publication; we reserve the right to alter specifications without prior notice. Speed and range vary with user weight, terrain type, battery charge, battery condition and tire pressure. Due to manufacturing tolerances and continual product improvement, length, width, turning radius and ground clearance can be subject to variance of + or - 3%. Special order seats or non-standard dimensions will not be fold-flat and depth-adjustable.

CA_GoGoEnduranceAL_Trifold_070325

PRIDE MOBILITY®



pridemobility.ca

The Go Go® Endurance AL+ is an FDA Class II Medical Device designed to aid individuals with mobility impairments.

GO GO[®] ENDURANCE AL+

Lightweight mobility plus so much more



FDA Class II
Medical Device¹

FEATURES

- New ALUMINUM FRAME for lighter weight and improved durability
- EZ TURN technology for the tight turning of a 3-wheel with the stability of a 4-wheel
- CHARGE360 allows you to magnetically charge your scooter, requiring minimal dexterity and no need to line up any pins
- Infinite tiller adjustment lever can be operated with your hand or foot
- Front and rear lights help you see and be seen in dark settings
- Feather-touch disassembly allows the unit to be easily separated into 5 pieces
- 17" x 17" mesh back seat with adjustable flip-up armrests
- USB charger located in the tiller
- Large Front basket (standard)
- 8 Ah airline-safe lithium-ion battery pack (16 Ah battery is available as an optional upgrade for increased range) **
- Interchangeable color panels for front and back

COLOR OPTIONS

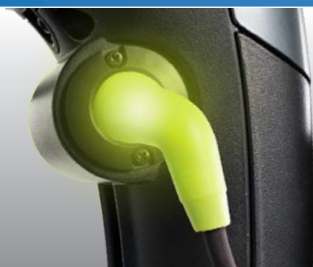


ACCESSORIES

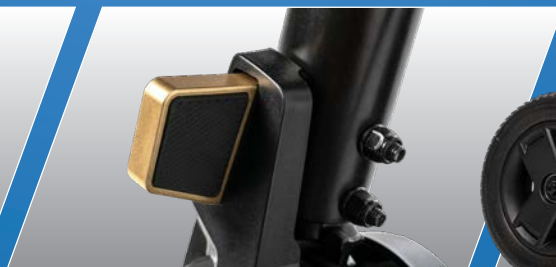
- Cup holder
- Cell phone holder
- Rearview mirror (single or pair)
- Saddlebag
- Under seat storage
- Rear basket
- Lap belt
- Weather cover
- Single cane crutch holder
- Double cane crutch holder
- Forearm crutch holder
- Wishbone crutch holder
- Walker holder
- Oxygen tank holder



Note: Cup holder, rear basket, and saddlebag are available as a bundle. A maximum of one rear accessory can be installed at a time. Compact, foldable seat available in 20x18 in place of 17x17 mesh seat.



Magnetic charging with CHARGE360 technology



Tiller adjustment mechanism can be operated by hand or foot



Pride's patented EZ TURN technology for tight turning