

OXYGEN TANK HOLDER INSTALLATION INSTRUCTIONS

ACCASMB2292 - OXYGEN HOLDER ASSEMBLY, 115° LIMITED RECLINE SEATS

Kit Contents:

REF#	QTY	PART #	DESCRIPTION
A1	2	SCRHHCS1116	SCREW, HHCS, BLACK ZINC, 5/16-18 X 1.75", GRADE 5
A2	2	NUTNYLK1026	NUT, NYLOCK JAM, BLACK ZINC, 5-/16-18
A3	2	SCRPPH1010	SCREW, PPH, BLACK ZINC, 1/4-20 X 0.75", GRADE 5
A4	2	NUTNJAM1014	NUT, NYLOCK JAM, BLACK ZINC, 1/4-20
A5	1	GRMRUB1023	GROMMET, RUBBER, 5/8"
A6	1	GRMRUB1015	GROMMET, RUBBER, 7/16"

If you require any assistance with these instructions, please call **Pride Technical Service** at **1-877-800-1248**. **Canada providers**, phone **1-888-570-1113**.

Tools needed:

- 1/2-in. socket and wrench
- Phillips screwdriver

Installation instructions:

1. Turn off the power to the controller.
2. Place the power chair into drive mode. Refer to the power chair owner's manual.
3. If the chair has a single-post headrest, install the large grommet (**A5**) into the larger hole of the mounting bracket. If the chair has a dual-post headrest, install the small grommet (**A6**) into the smaller hole of the mounting bracket.
4. Place the seatback in the full forward position.
5. Remove the headrest.
6. If the chair has a single-post headrest bracket, insert the headrest through the larger hole in the top link weldment (see figure 2a). If the chair has a dual-post headrest bracket, insert the left receiver of the headrest through the small hole of the top link weldment (see figure 2b).
7. Install the hinge bracket of the assembled oxygen tank holder directly on top of the armrest receiver bar and secure with the supplied hardware (**A1** and **A2**). See figure 3.
8. The height of the oxygen tank holder may need to be adjusted to ensure that the angle of the top pivot bracket is approximately 90° when the seatback is in the upright position. (See figure 2a or 2b.) If adjustment is needed, remove the hardware (**A3** and **A4**), adjust the height of the bracket, realign the holes, and reinstall the hardware (**A3** and **A4**). See figure 3.

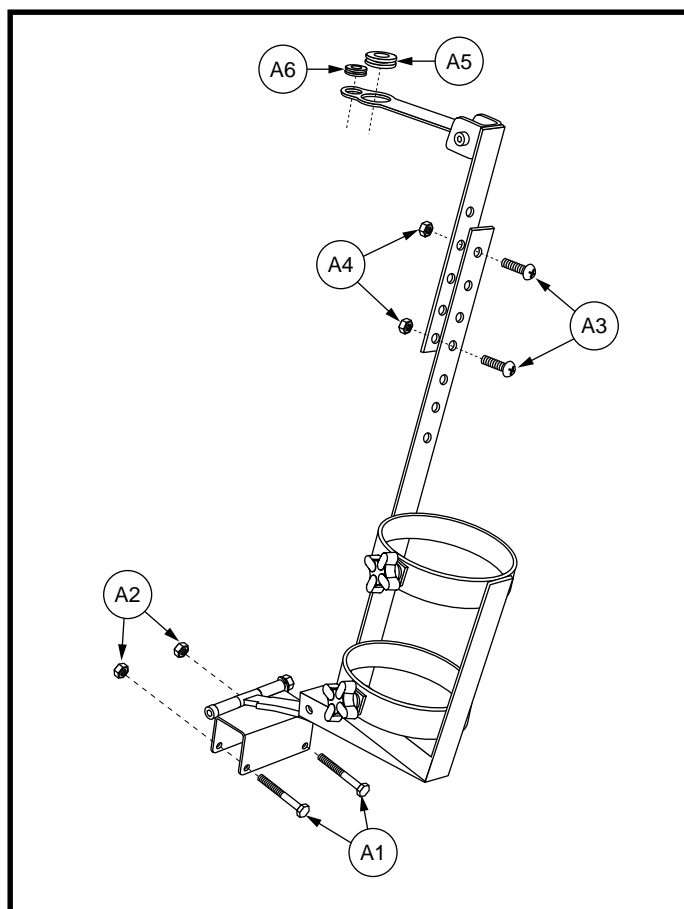


Figure 1. Oxygen Tank Holder Breakdown

The oxygen tank holder assembly is now ready for use.

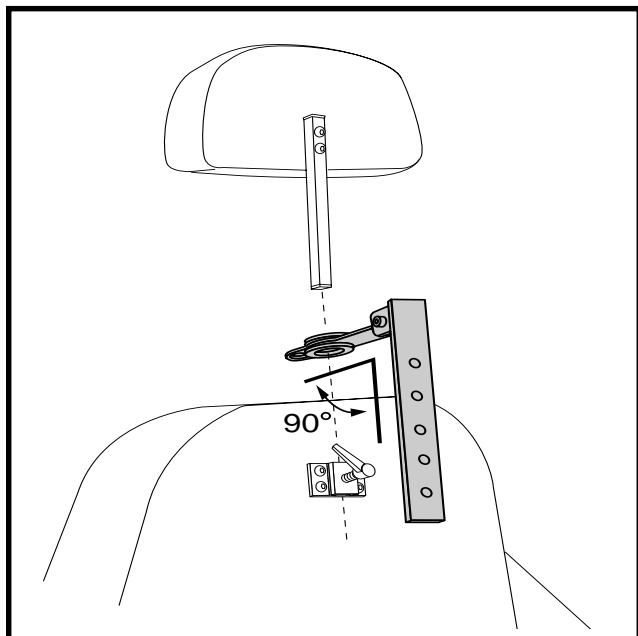


Figure 2a. Single-post Headrest Bracket

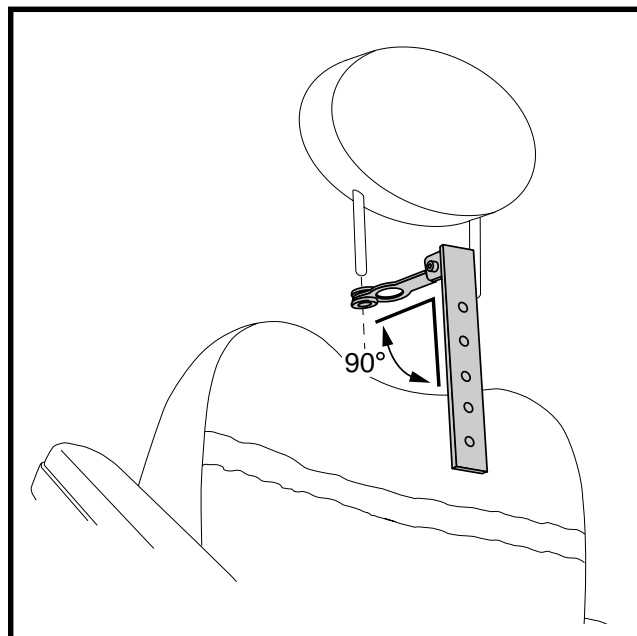


Figure 2b. Dual-post Headrest Bracket

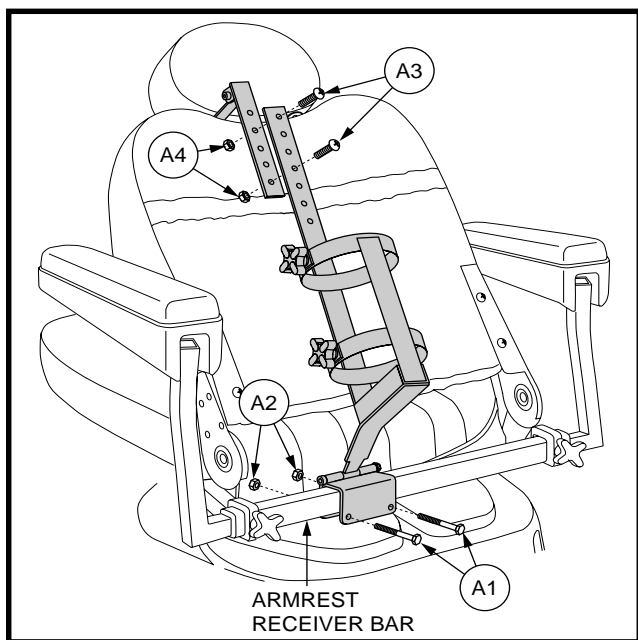


Figure 3. Assembly View

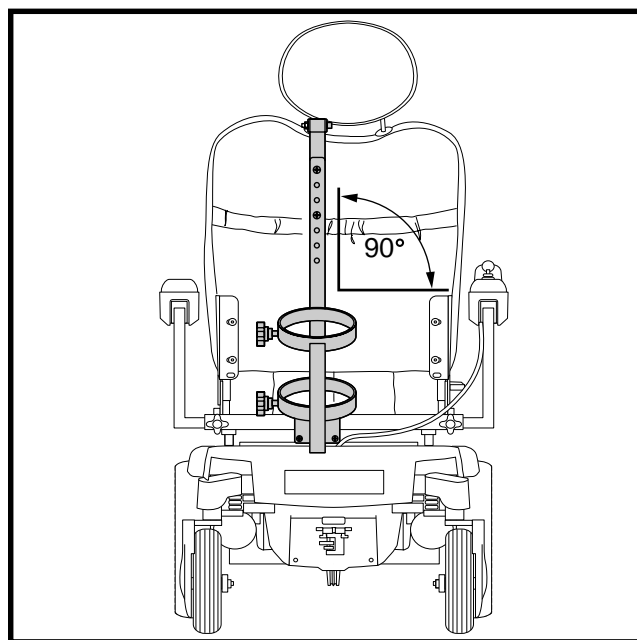


Figure 4. Tank Holder Aligned Correctly