

LIFT CHAIR SINGLE MOTOR/TRANSFORMER REPLACEMENT INSTRUCTIONS

DRVASMB1546 — ASSEMBLY, EXTERNAL TRANSFORMER, STANDARD MOTOR

Kit Contents:

REF#	QTY	PART NUMBER	DESCRIPTION
A1	1	DRVMOTR1171	MOTOR, SLAVE MOTOR, STANDARD 24V DC, 992.870.009, USA
A2	1	CTLDC1301	ELECTRONIC, TRANSFORMER, 115V, EXTERNAL, LOW VOLTAGE, SINGLE MOTOR, 992.761.001, USA, CANADA
A3	1	HARUSHD2436	ELECTRONIC, CONNECTION Y CABLE, 7 FT, LIFT CHAIR, LOW VOLTAGE, UNIVERSAL, STANDARD WITH QUICK RELEASE CLIP
A4	2	PINCLEV1021	CLEVIS PIN, 3/8" X 1.71", UNPLATED
A5	2	PINSOTR1008	PIN, COTTER, 0.25" SHAFT X 1.375" OVERALL LENGTH X 0.072" WIRE, BOW TYPE, SELF LOCKING
A6	3	PLSTIE1004	TIE WRAP, BLACK, 8"
A7	1	SCRPPTC1021	SCREW, PPH, BZ, #8 X 1/2", THREAD CUTTING, TYPE 25
A8	2	CLPCBLC1001	CLAMP, CABLE, BLACK NYLON, 3/16", P-CLIP
*A9	1	SCRTORX1002	SCREW, TORX, ZINC PLATED, #25, SERRATED COARSE THREAD TYPE 17 TIP

*A9 Not shown.

If you require any assistance with these instructions, please call **Pride Technical Service** at **1-877-800-1248**.
Canada providers, phone **1-888-570-1113**.

Tools needed:

- Phillips Screwdriver
- Wire Cutters

Removal/Installation instruction:

1. Make sure the lift chair is in the seated position.
2. Turn the lift chair over.
3. Remove the cotter pins (A5) and clevis pins (A4) that fasten the motor to the frame. See figure 1.
4. Unscrew the cable clamp (A7 and A8) that fastens the power cord to the frame. See figure 1.
5. Cut any wire ties used to secure the cables to the frame. Discard the old motor and hardware.

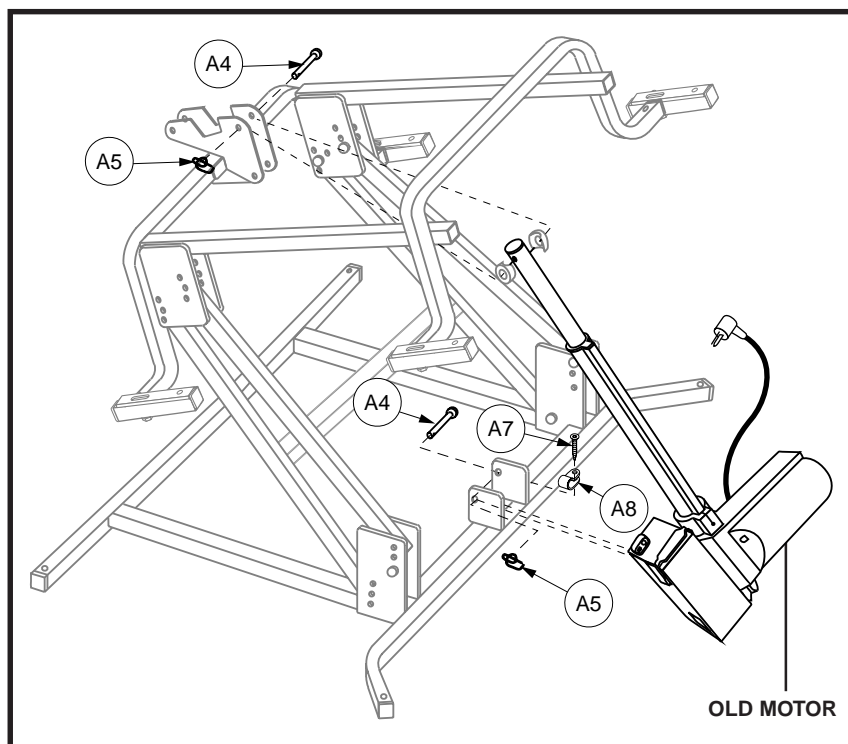


Figure 1. Motor Removal

6. Attach the new lift motor (A1) to the frame with the new cotter pins (A5) and clevis pins (A4) supplied with the assembly. See figure 2.
7. Attach the new connection cable (A3) to the frame with the new screw and cable clamp (A7 and A8) supplied with the assembly. Secure the cable right before it splits into two. See figure 2.
8. Route the connection cable (A3) through the lift frame as shown. See figure 2. Continue to route the cable until the quick-release connection is in the bottom of the lift chair side pocket.
9. Secure the connection cable and the motor cable to the lift frame with wire ties (A6). See figure 2. Use additional wire ties to secure excess cord to the cross bar on the H-frame. Cut the excess from the wire ties.
10. Plug the connection cable (A3) into the external transformer (A2).
11. Plug the motor and the hand control into the connection cable (A3). Remove the quick release clip if necessary.
12. After the motor is installed, return the lift chair to the upright position. Plug the external transformer into a properly wired electrical outlet and run the lift chair one cycle to ensure that no wires are being pulled too tight or crushed by any pinch points that may exist.
13. Route the hand control cable under the arm of the chair. Secure the cable to the arm using the supplied cable clamp and Torx screw (A8 and A9).

The lift chair is now ready for use.

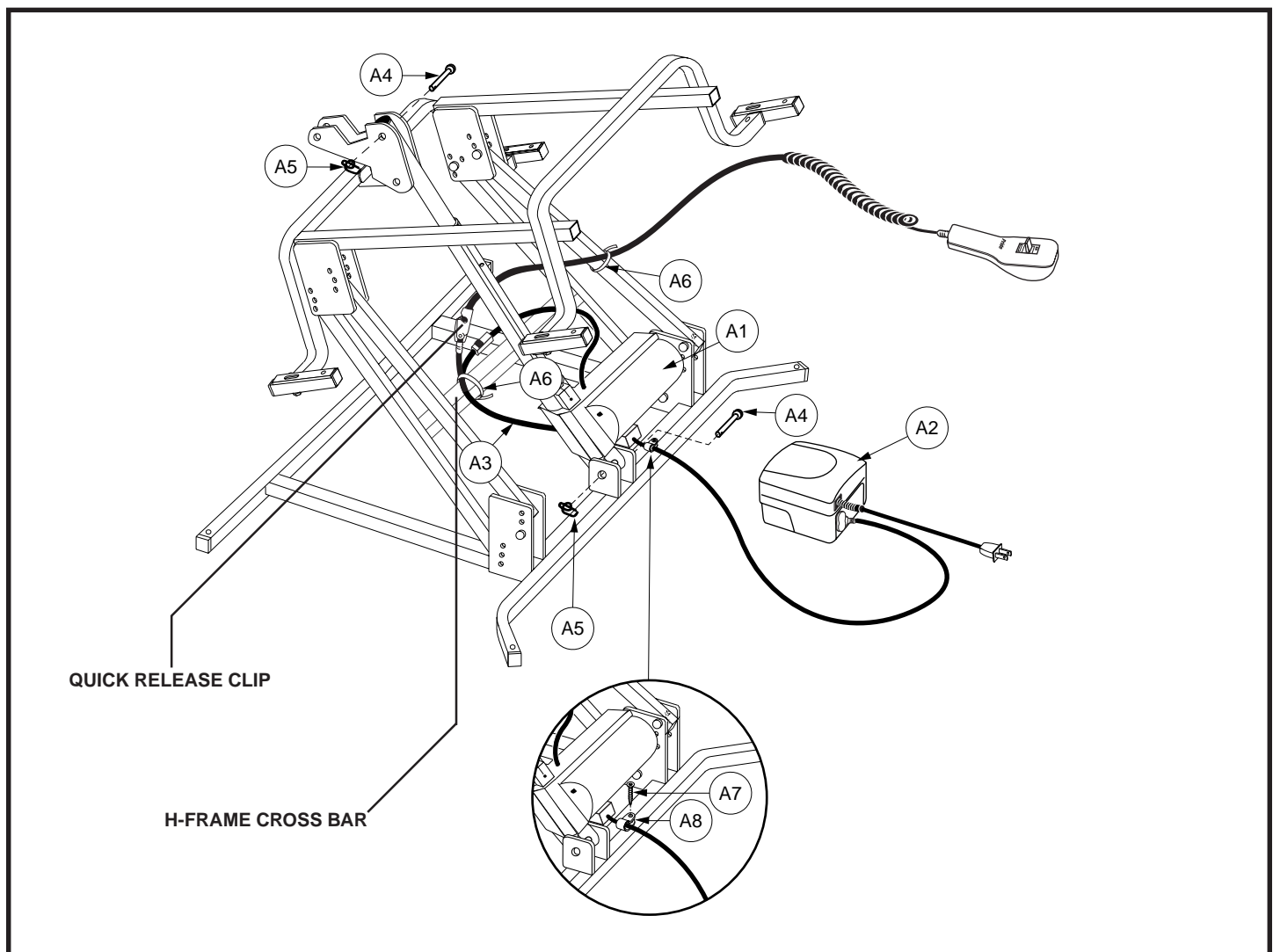


Figure 2. Motor Installation