

INTERACTIVE ASSIST



Interactive Assist is an innovative app from Quantum Rehab® which provides a direct real-time connection from a power chair's electronics to a provider's programming station. The connection provides the technician with full system and diagnostics information to aid in reducing service trips.

Scan the QR code to watch a video of Interactive Assist.

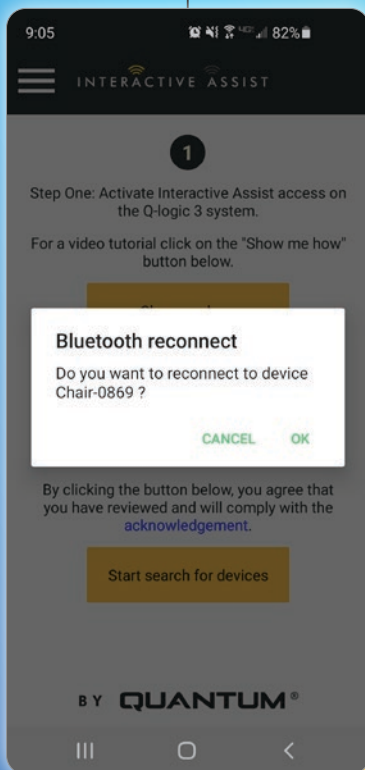


NEW

You can now send images through chat to provide a visual reference.*

features

- Save time and money
 - Reduce trips to client's home
- Real-time monitoring and mirroring
- Assists with programming chairs
- Communicate with client via text chat
- NEW: System tutorial links to a video on the Quantum® website*



NEW

Bluetooth® auto reconnect eliminates the need to pair devices again in the event of a disconnection.*



Download today to get started!



quantumrehab.ca
888-570-1113

* New features only compatible with Android™ OS 8 and higher and Apple® iOS 12 and higher. Current version of the app will continue to work on any OS below those previously mentioned.

QUANTUM®
1 FOR REHAB POWER