

*SOLUTIONS FOR LIFE*



[cushions.stealthproducts.com](http://cushions.stealthproducts.com)  
**+1 (800) 965-9229**





# CUSHION CATEGORIES



**Skin Protection and Positioning Series (SPP)** cushions offer a range of positioning options, convenient storage, and the Coolcore® Chemical-Free cover technology to effectively maintain comfort and proper contact skin temperature throughout the seasons. A selection of molded foams and a variety of inserts, relief cutouts, and toppers provide exceptional stability and comfort while keeping the pelvis in an optimal neutral position.



**Positioning Series (P)** cushions employ a high-density molded foam base with a closed cell posterior support section to keep the pelvis in a neutral position, provide optimal pelvic positioning and stability, and add exceptional comfort with a soft foam topper.



**Skin Protection Series (SP)** includes a general-use cushion with a foam or gel topper, specifically designed to protect the user from skin abrasions and discomfort during long-term use. It also utilizes a chemical-free Coolcore® cover, designed to effectively maintain proper and comfortable contact skin temperature throughout the seasons.



**General Use Series (G)** cushions are specifically designed for comfort, with basic mild contouring and cutouts for coccygeal and sacral relief. It is available from 16 in. to 22 in. (40.64cm to 55.88cm) in width and from 16 in. to 20 in. (40.64cm to 50.80cm) in depth.

ALSO AVAILABLE  
**CUSTOM.STEALTHPRODUCTS.COM**



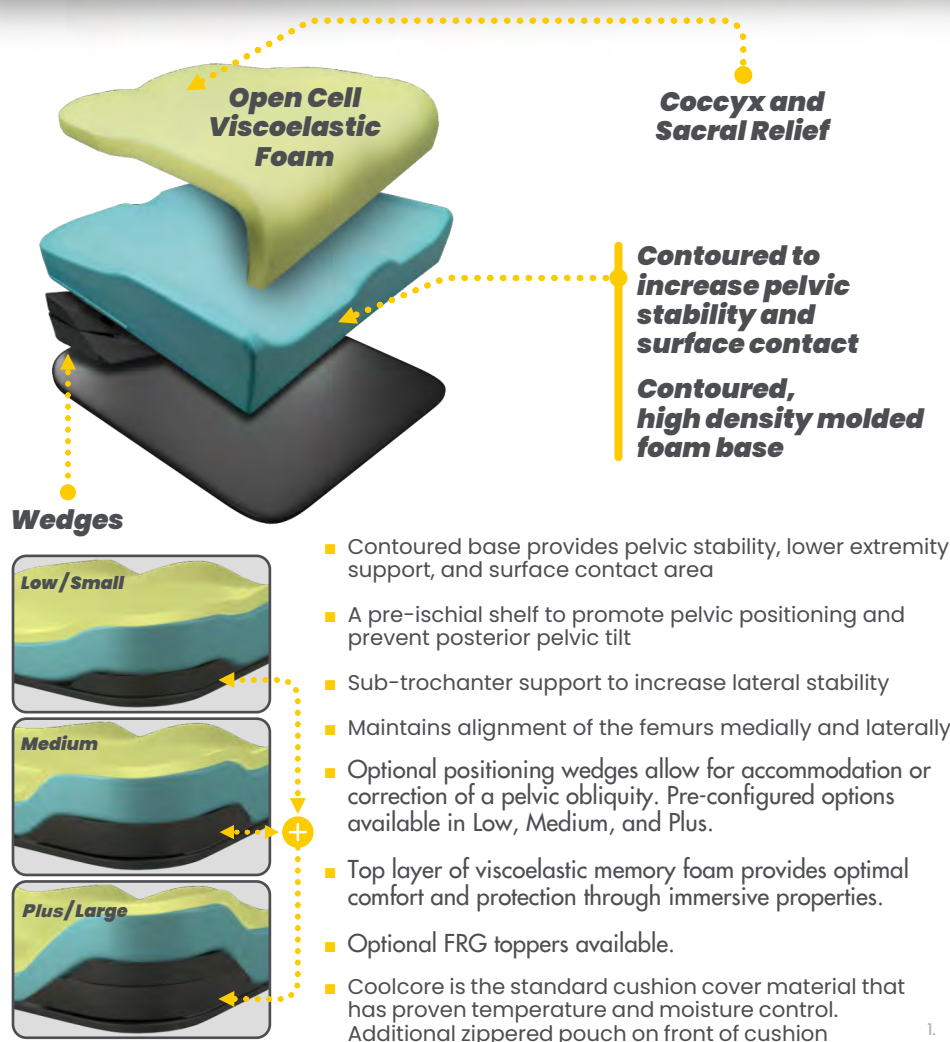


# SPP

- ▶ **Low Profile Tru-Comfort 2**
- ▶ **Lateral & Pre-Ischial Shelf**
- ▶ **Contoured High Density Foam Base**
- ▶ **Base, Coccyx & Sacral Relief**



## ESSENCE



### WEIGHT CAPACITY

**450 lbs.**

### OVERALL WEIGHT

**5.5 lbs.**

### DIMENSIONS

from 10in x 10in to 22in x 24in

SOF<sup>1</sup> available

### PROFILE

**3½ in**

### MSRPS

**\$485 - \$775**

#### BASIC

#### PLUS

#### ADP

Up to 20"x20"  
>20"x20"  
Up to 20"x20"  
>20"x20"

SE0001481  
SE0001482  
SE0001487  
SE0001488

1. Special Order Form  
2. CoolCore® is standard on all cushions except the Simplicity G.  
3. Special order sizes available for all cushions except the Glacial SP. Contact sales for additional assistance



- **Multi-layered foam**
- **Deep Contour**
- **Coolcore® cushion cover has pockets on sides**

**SPP**



# TRU-COMFORT® 2

**WEIGHT CAPACITY**

**450 lbs.**

**OVERALL WEIGHT**

**3.9 lbs.**

**DIMENSIONS**

from 14in x 14in to 24in x 24in

SOF<sup>1</sup> available

**PROFILE**

**4.9 in**

**MSRPS**

**\$515 - \$575**

**ADP**

Sizes Up to 20"x20"  
Sizes >20"x20"

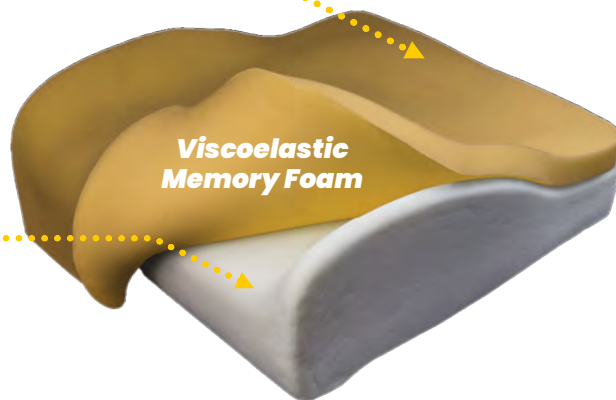
SE0001524  
SE0001525

**Coccyx and Sacral Relief**

**Contoured to increase pelvic stability and surface contact**

**Deeply contoured, high density molded foam base**

**Viscoelastic Memory Foam**



- Deep contoured base provides maximal pelvic stability, lower extremity support, and surface contact area
- Sub-trochanter support to increase lateral stability.
- Maintains alignment of the femurs medially and laterally
- Anti-thrust component provides a pre-ischial shelf to promote pelvic positioning. Abductor and adductor components create troughing to promote lower extremity positioning
- Top layer of viscoelastic memory foam provides optimal comfort and protection through immersive properties
- Coolcore is the standard cushion cover material that has proven temperature and moisture control. Additional zippered pockets on side of cushion

## SIDE POCKETS



1. Special Order Form  
2. CoolCore® is standard on all cushions except the Simplicity G.  
3. Special order sizes available for all cushions except the Glacial SP. Contact sales for additional assistance

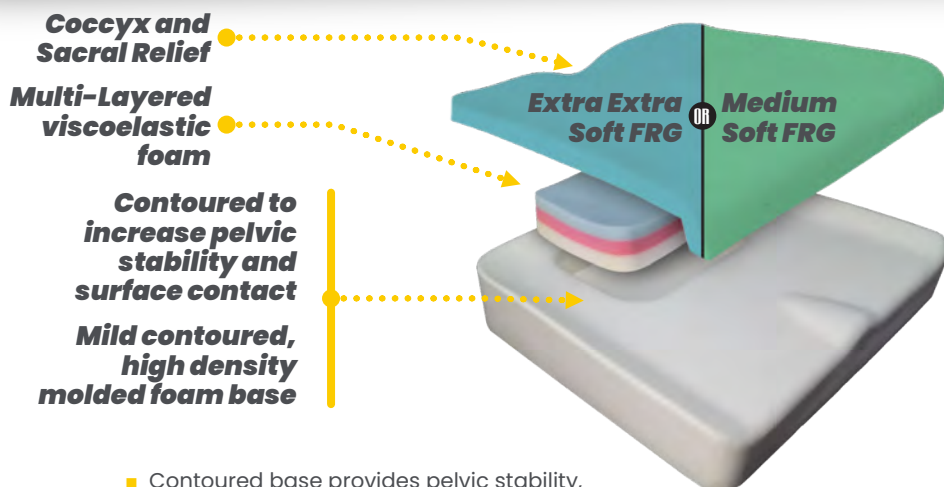


# SPP

- ▶ **Pre-Ischial Shelf and Lateral Adductor build-up**
- ▶ **Mild Contoured Base, High Density Molded Foam**
- ▶ **Ischial insert consisting of multi-layered viscoelastic foam**



## SPECTRUM FOAM



- Contoured base provides pelvic stability, lower extremity support, and increases overall surface contact area
- Pelvic well provides a pre-ischial shelf to prevent posterior pelvic tilt. A triple layer of viscoelastic foam within the well promotes optimal immersion and envelopment
- Top layer of Extra Extra Soft SunMate FRG foam provides optimal protection through immersive properties and improves micro-climate. Medium-Soft SunMate FRG foam used on cushions greater or equal to 22in (55.88cm) wide
- Coolcore is the standard cushion cover material that has proven temperature and moisture control
- Fire resistance: ISO 8191-1, ISO 8191-2, CAL 117-2013
- Biological evaluation/Cytotoxicity ISO 10993-5, 10993-10
- Sub-trochanter support to increase lateral stability
- Maintains alignment of the femurs medially and laterally

### WEIGHT CAPACITY

**650 lbs.**

### OVERALL WEIGHT

**3.75 lbs.**

### DIMENSIONS

from 14in x 18in to 32in x 28in

SOF<sup>1</sup> available

### PROFILE

**3in**

### MSRPS

**\$580 - \$630**

### ADP

Sizes Up to 20"x20"  
Sizes >20"x20"

SE0001528  
SE0001529

1. Special Order Form  
2. CoolCore® is standard on all cushions except the Simplicity G.  
3. Special order sizes available for all cushions except the Glacial SP. Contact sales for additional assistance



- ▶ **Extra Soft SunMate FRG Foam Top**
- ▶ **Twin-Cell, Lightweight Fluid Insert Under At-Risk Bony Areas**
- ▶ **Pre-Ischial Shelf**
- ▶ **Mild Contoured Base, High Density Molded Foam**

# SPP



## SPECTRUM GEL

### WEIGHT CAPACITY

**550 lbs.**

### OVERALL WEIGHT

**4.3 lbs.**

### DIMENSIONS

from 14in x 18in to 24in x 26in

SOF<sup>1</sup> available

### PROFILE

**3in**

### MSRPS

**\$580 - \$650**

### ADP

Sizes Up to 20"x20"  
Sizes >20"x20"

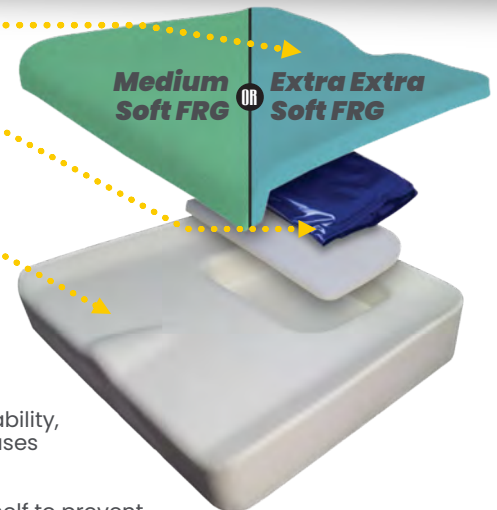
SE0001530  
SE0001531

### Coccyx and Sacral Relief

### Gel Insert

**Contoured to increase pelvic stability and surface contact**

**Mild contoured, high density molded foam base**



- Contoured base provides pelvic stability, lower extremity support, and increases overall surface contact area
- Pelvic well provides a pre-ischial shelf to prevent posterior pelvic tilt. Segmented for each IT, a lightweight gel pack provides additional skin protection, pelvic stability, and optimal immersion
- Top layer of Extra Extra Soft SunMate FRG foam provides optimal protection through immersive properties and improves micro-climate. Medium Soft SunMate FRG foam used on cushions greater or equal to 22in (55.88cm) wide
- Coolcore is the standard cushion cover material that has proven temperature and moisture control
- Pre-ischial support to help prevent posterior pelvic tilt
- Fire resistance: ISO 8191-1, ISO 8191-2, CAL 117-2013
- Biological evaluation/Cytotoxicity ISO 10993-5, 10993-10
- Sub-trochanter support to increase lateral stability
- Maintains alignment of the femurs medially and laterally

1. Special Order Form  
2. CoolCore® is standard on all cushions except the Simplicity G.  
3. Special order sizes available for all cushions except the Glacial SP. Contact sales for additional assistance

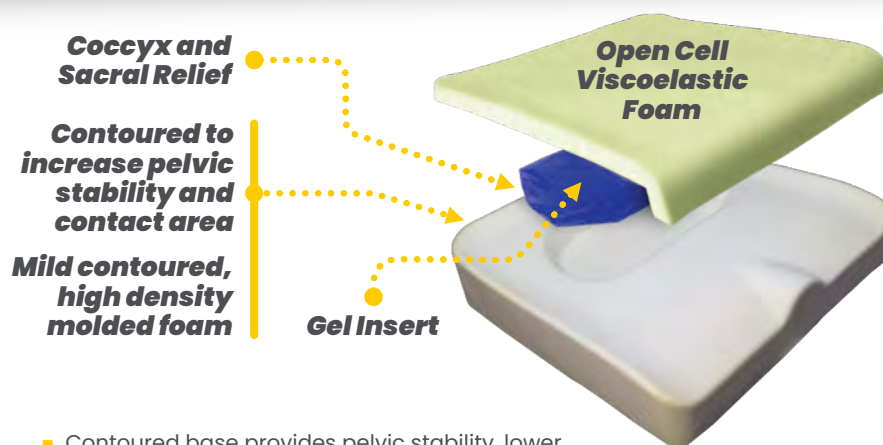


# SPP

- ▶ **Pre-Ischial Shelf and Lateral Adductor build-up**
- ▶ **Contoured Base, High Density Molded Foam**
- ▶ **Twin-Cell, Aqueous Gel Insert Under At-Risk Bony Areas**



## SOLUTION® GEL



**Coccyx and Sacral Relief**

**Contoured to increase pelvic stability and contact area**

**Mild contoured, high density molded foam**

**Gel Insert**

**Open Cell Viscoelastic Foam**

- Contoured base provides pelvic stability, lower extremity support, and increases overall surface contact area.
- Pelvic well provides a pre-ischial shelf to prevent posterior pelvic tilt. Segmented for each IT, an aqueous gel pack provides additional skin protection and reduces shearing forces.
- Top layer of viscoelastic memory foam provides optimal comfort and protection through immersive properties.
- Coolcore is the standard cushion cover material that has proven temperature and moisture control.
- Fire resistance: ISO 8191-1, ISO 8191-2, CAL 117-2013
- Biological evaluation/cytotoxicity ISO 10993-5, 10993-10
- Sub-trochanter support to increase lateral stability
- Maintains alignment of the femurs medially and laterally

**WEIGHT CAPACITY**

**500 lbs.**

**OVERALL WEIGHT**

**4.9 lbs.**

**DIMENSIONS**

**from 10in x 10in to 22in x 24in**

**SOF<sup>1</sup> available**

**PROFILE**

**3 in**

**MSRPS**

**\$375 - \$430**

**ADP**

**Sizes Up to 20"x20"**  
**Sizes >20"x20"**

**SE0001526**  
**SE0001527**



- ▶ **Pre-Isochial Shelf and Lateral Adductor build-up**
- ▶ **Mild Contoured Base with High Density Closed Cell posterior lateral foam inserts**
- ▶ **Extra Soft SunMate FRG Topper**



# PREMIERE

**WEIGHT CAPACITY**

**500 lbs.**

**OVERALL WEIGHT**

**3½ lbs.**

**DIMENSIONS**

from 14in x 13in to 22in x 22in

SOF available

**PROFILE**

**3.7in**

**MSRPS**

**\$585 - \$730**

**ADP**

Sizes 16" to 20" Wide  
Sizes >20" Wide

SE0001622  
SE0001623

**Coccyx and Sacral Relief**

**Contoured to increase pelvic stability and contact area**

**Extra Soft SunMate® FRG**

**High density closed cell lateral foam inserts**

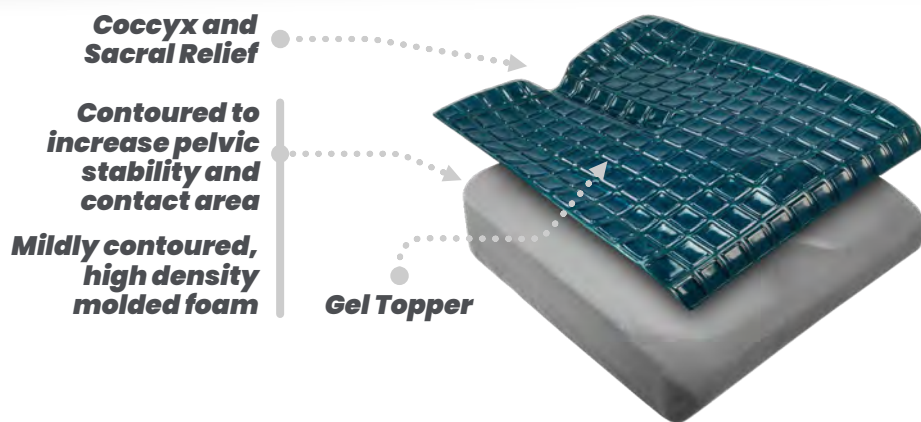
- Contoured base provides lower extremity support and increases overall surface contact area
- Additional high density foam inserts at the posterior lateral aspect of the cushion to promote offloading for increased pelvic positioning
- Posterior cutout provides relief at the coccyx and lower sacral region
- Top layer of Extra Soft SunMate FRG foam provides optimal protection through immersive properties and improves micro-climate
- Coolcore is the standard cushion cover material that has proven temperature and moisture control
- Fire resistance: ISO 8191-1, ISO 8191-2, CAL 117-2013
- Biological evaluation/cytotoxicity ISO 10993-5, 10993-10
- Sub-trochanter support to increase lateral stability
- Maintains alignment of the femurs medially and laterally

1. Special Order Form  
2. CoolCore® is standard on all cushions except the Simplicity G.  
3. Special order sizes available for all cushions except the Glacial SP. Contact sales for additional assistance

- ▶ **New SIM G base, fluid resistant overlay top and sides**
- ▶ **TPU Heat-Sealed**
- ▶ **Low Profile**
- ▶ **Lightweight Cooling Gel Topper**



# GLACIAL



- Contoured base provides pelvic stability, lower extremity support, and increases overall surface contact area.
- Pelvic well provides a pre-ischial shelf to prevent posterior pelvic tilt. A silicone gel overlay provides additional skin protection and reduces shearing forces.
- Coolcore is the standard cushion cover material that has proven temperature and moisture control.
- Fire resistance: ISO 8191-1, ISO 8191-2, CAL 117-2013
- Biological evaluation/cytotoxicity ISO 10993-5, 10993-10
- Sub-trochanter support to increase lateral stability
- Maintains alignment of the femurs medially and laterally

**WEIGHT CAPACITY**  
**400 lbs.**

**OVERALL WEIGHT**  
**4.3 lbs.**

## DIMENSIONS

from 14in x 12in to 24in x 24in

## PROFILE

**2.9in**

## MSRPS

**\$265 - \$530**

## ADP

Sizes Up to 15" Wide  
Sizes 16" to 19" Wide  
Sizes 20" to 24" Wide

SE0001619  
SE0001620  
SE0001621



- ▶ **New SIM G base**
- ▶ **SunMate FRG Extra Extra Soft**
- ▶ **Blue Topper, Low Profile**
- ▶ **Lightweight**

**SP**



**ZEN**

**WEIGHT CAPACITY**

**400 lbs.**

**OVERALL WEIGHT**

**2½ lbs.**

**DIMENSIONS**

from 14in x 12in to 24in x 24in

SOF<sup>1</sup> available

**PROFILE**

**3in**

**MSRPS**

**\$455 - \$765**

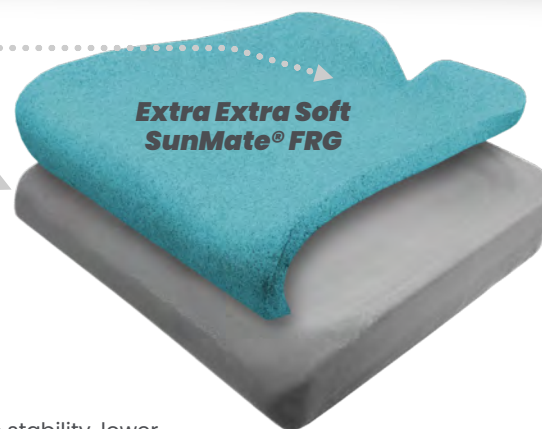
**ADP**

Sizes 10" - 15" Wide	SE0001651
Sizes 16" - 20" Wide	SE0001652
Sizes 21" - 24" Wide	SE0001653

**Coccyx and Sacral Relief**

**Contoured to increase pelvic stability and contact area**

**Mildly contoured, high density molded foam**



- Contoured base provides pelvic stability, lower extremity support, and increases overall surface contact area
- Posterior cutout provides relief at the coccyx and lower sacral region.
- Top layer of Extra Extra Soft SunMate FRG foam provides optimal skin protection through immersive properties and improves micro-climate
- Coolcore is the standard cushion cover material that has proven temperature and moisture control
- Fire resistance: ISO 8191-1, ISO 8191-2, CAL 117-2013
- Biological evaluation /cytotoxicity ISO 10993-5, 10993-10
- Sub-trochanter support to increase lateral stability
- Maintains alignment of the femurs medially and laterally

1. Special Order Form  
 2. CoolCore® is standard on all cushions except the Simplicity G.  
 3. Special order sizes available for all cushions except the Glacial SP. Contact sales for additional assistance



- ▶ **High Density Foam**
- ▶ **Stealth-Tek Cover Standard**
- ▶ **More Contour to Sacral / Coccyx Relief Well**

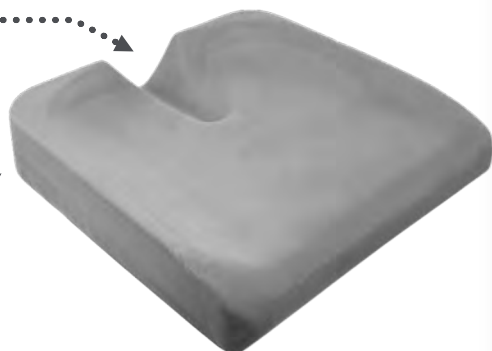


# SIMPLICITY

**Coccyx and Sacral Relief**

**Contoured to increase pelvic stability and contact area**

**Mildly contoured, high density molded open cell foam**



- ▶ **Contoured base provides pelvic stability, lower extremity support, and increases overall surface contact area**
- ▶ **Posterior cutout provides relief at the coccyx and lower sacral region**
- ▶ **Easy to clean Stealth-Tek material comes standard as the cushion cover**

**WEIGHT CAPACITY**

**400 lbs.**

**OVERALL WEIGHT**

**2.2 lbs.**

**DIMENSIONS**

from 16in x 16in to 24in x 24in

**PROFILE**

**2 in**

**MSRPS**

**\$310 - \$370**

**ADP**

Sizes Up to 20"x20"  
Sizes > 20"x20"

SE0001522  
SE0001523



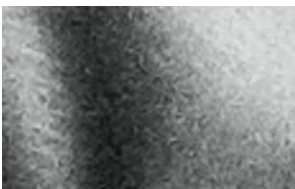
# COVERS & FOAM MODS

## COVER OPTIONS



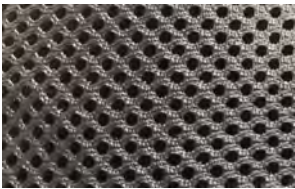
### COOLCORE®

Coolcore is a research proven performance fabric technology that adapts to its environment and regulates temperature by managing heat and moisture. The proprietary construction helps manage and distribute moisture quickly throughout the fabric to enhance the evaporation and drying time.



### STEALTH-TEK

Stealth-Tek is a cast coated fabric, which is nylon/polyester fabric coated with polyurethane through the cast coating method. These type of fabrics are waterproof with stretch capability and applications in medical and healthcare. Stealth-Tek is Fluid Proof PU Film laminated to 100% polyester knit T-jersey. It is used in a variety of applications. Waterproof, Breathable and Washable.



### AIR MESH

Air Flow Mesh, better known as Air Mesh, is equipped with fine pores for superior air circulation, it can assist with positioning if the client has sliding issues with the current cushion cover material. This fabric is ideal for those in hot or humid environments.

#### ADP Extra Covers:

Standard Sizes - SESND1050 / Bariatric Sizes - SESND1060 / Non-Standard Sizes - SESND1055

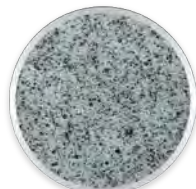
## FOAM OPTIONS

### OPEN CELL



Medium

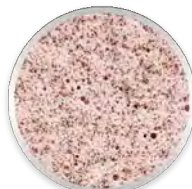
### SUNMATE® FRG



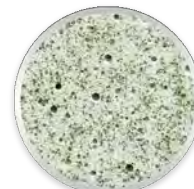
Extra Extra Soft



Extra Soft



Soft



Medium Soft



Medium

#### Open Cell (OC3)

Open cell viscoelastic polyurethane foam is a soft foam. Open cell refers to the cell walls, or surfaces of the bubbles, which are broken so that air fills all of the spaces in the material.

#### SunMate® Fire Retardant Graphite (FRG) Cushions

FRG cushions provide the same high impact energy absorption and soft pressure properties as regular SunMate®, but with an added element of safety. SunMate® FRG contains a non-halogenated fire retardant that allows the cushion to pass more stringent fire tests. FRG also provides medical or government facilities, required to purchase equipment that meets strict fire codes, with a safe, high-quality cushion option.<sup>1</sup>

The FRG is a patented all-natural fire retardant material (no additives) made of 33% to 36% plant-based ingredients.

**ADP Extra Pressure Relief - Specialty Foam, Air, Gel - SESND1045**

# ADDITIONAL OPTIONS

## INCONTINENT LINER OPTIONS



### POLYURETHANE LINER

#### ► 4 Way Stretch

The Polyurethane Liner provides four (4) way stretch, waterproof barrier between the cushion cover and the cushion foam and comes with a waterproof zipper.



### URETHANE LINER

#### ► 2 Way Stretch

Basic two (2) way stretch, waterproof barrier. Comes with a waterproof zipper.

#### ADP Extra Covers:

Standard Sizes - SESND1050 / Bariatric Sizes - SESND1060 / Non-Standard Sizes - SESND1055

## RIGIDITY BASES

ADP SESND1015



### ABS CONTOUR MOLD (ACM)

Takes up "hammocking" in the sling to provide a stable flat surface for the cushion. Comes in 3 widths and it is rated for up to 350lbs (158.76kg) weight capacity.



### FLAT ABS

Provides a stable flat surface for the cushion. The base final dimensions will match cushion dimensions. It is rated for up to 350lbs (158.76kg) weight capacity.

ALSO AVAILABLE

**CUSTOM.STEALTHPRODUCTS.COM**











**FOLLOW US**



<https://stealthproducts.com>  
+1 (800) 965-9229  
+1 (512) 715-9995  
[info@stealthproducts.com](mailto:info@stealthproducts.com)



Distributed by: Pride Mobility Products  
(888) 570-1113 -- [quantumrehab.ca](http://quantumrehab.ca)