

Stealth Products
Solutions For Life®



Original





Main features

Customization

Designed to be adaptable to the user's needs, every single part of the Original can be customised to fit the individual with minimal tools and easy adjustments.

Flexibility

Original® is the most flexible backrest in the world! The central column gives freedom of movement and support to improve quality of life for users.



Comfort

Comfortable washable foam pads can be used in any combination and with 12 different shapes to choose from it is unique to the user's needs.

Design

Original® is the winner of 5 International design contests. These awards confirm the value of this revolutionary product.



Height



4V

5V

6V

- 4 Vertebrae cm 29 / 11.5"
- 5 Vertebrae cm 35 / 13.75"
- 6 Vertebrae cm 42 / 16.5"

Aluminum is the most adaptable material to make each stave of the backrest suit the user's body!

Width



S

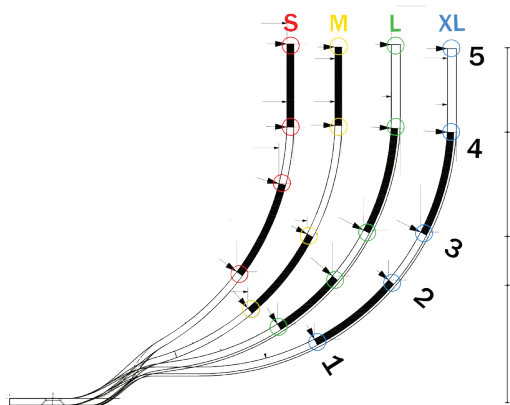
M

L

XL

- S for wheelchairs from 28 to 35 / 11" - 13.75"
- M for wheelchairs from 35 to 40 / 13.75" - 15.75"
- L for wheelchairs from 38 to 43 / 15" - 17"
- XL for wheelchairs from 40 to 45 / 13.75" - 17.75"

Depth



STAVE	1	2	3	4	5
S	25mm 1.0 in	64mm 2.5 in	89mm 3.5 in	120mm 4.75 in	N/A
M	13mm .50 in	51mm 2.0 in	95mm 3.75 in	133mm 5.25 in	N/A
L	6mm .25 in	32mm 1.25 in	51mm 2.0 in	102mm 4.0 in	140mm 5.5 in
XL	13mm .50 in	32mm 1.25 in	51mm 2.0 in	95mm 3.75 in	133mm 5.25 in

*Note: All measurements are approximate.









STANDARD



CONTOUR



Models

	STANDARD	CONTOUR
4V S-M-L-XL		
5V S-M-L-XL		
6V S-M-L-XL		

3 heights
4 widths
2 depths

24 models





Adjustable clamp for rigid frame wheelchairs

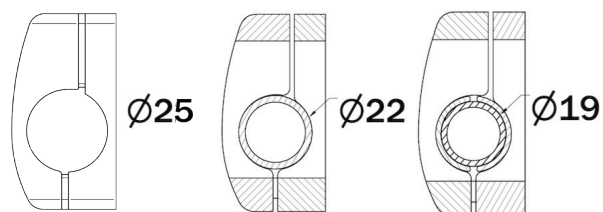
(2016 version)



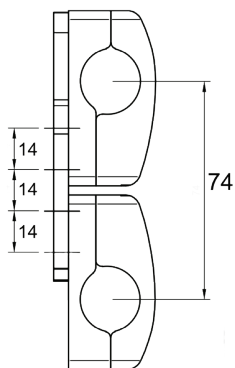
Characteristics:

- ① height adjustment
- ② rotation adjustment
- ③ depth adjustment
- ④ tube diameter: 19-22-25 mm

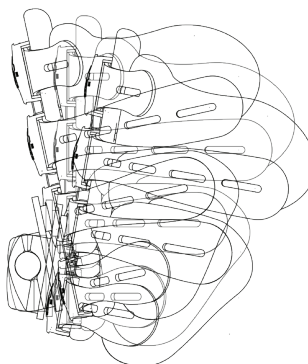
④



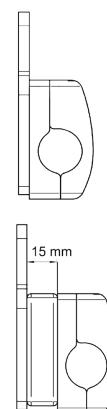
①



②

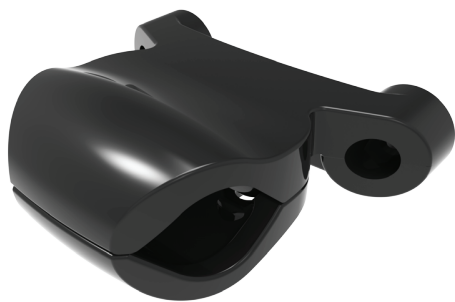


③



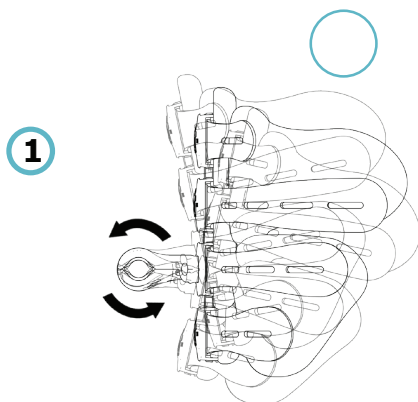


Clamp for rigid wheelchairs

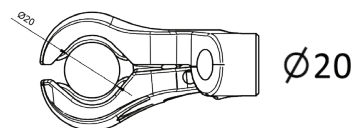


Characteristics:

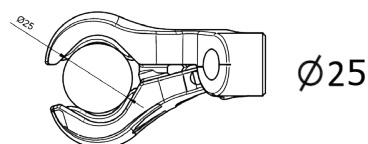
- ① rotation adjustment
- ② tube diameter: 20-25 mm
7/8" - 1.00"



②



Ø20



Ø25

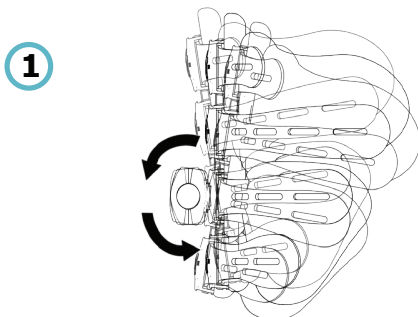


Clamp for rigid wheelchairs - Type G -

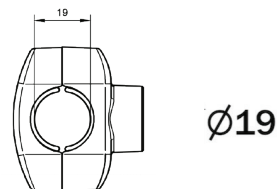


Characteristics:

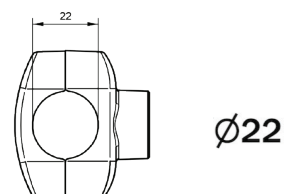
- ① rotation adjustment
- ② tube diameter: 19-22 mm
3/4" - 7/8"



②



Ø19

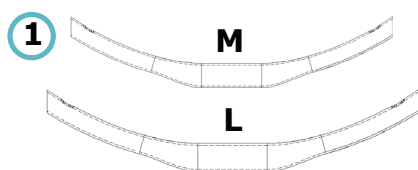
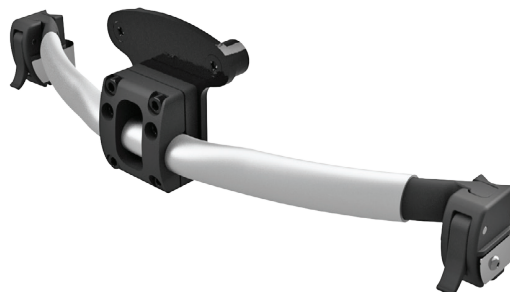


Ø22



Adjustable clamp for folding wheelchairs

(2016 version)



Characteristics:

① rigidizer bar to specify:

M: 36-41 cm **L :** 41-46 cm
14" - 16" 16" - 18"

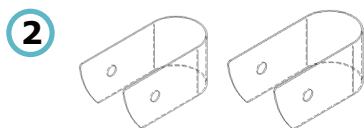
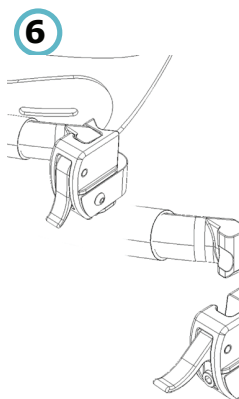
② hose clamp: 19-21 / 22-25 mm
3/4"-7/8" / 7/8"-1"

③ height adjustment

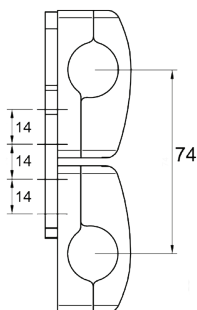
④ depth adjustment

⑤ rotation adjustment

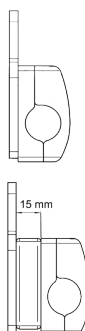
⑥ easy unhook



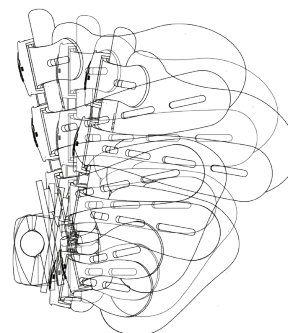
③



④

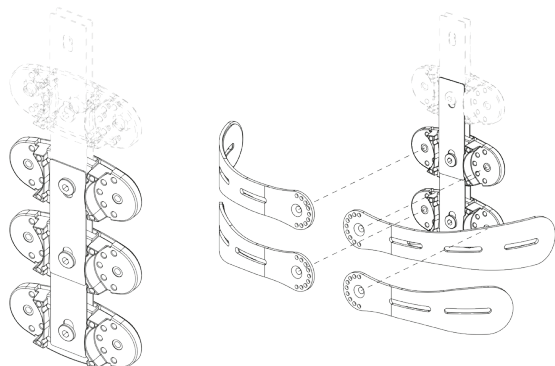


⑤





Features

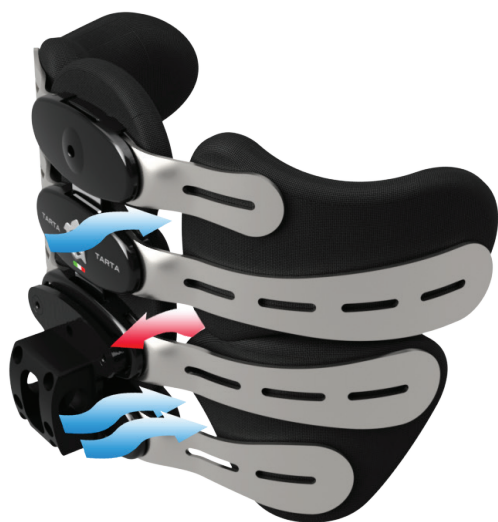
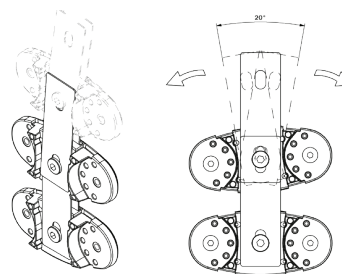
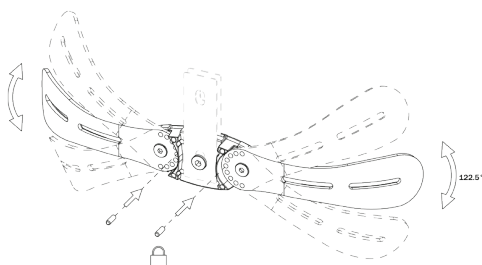


Modular structure

to easily change the length of the backrest! This feature is extremely useful for children.

Extreme customization

to satisfy all the users needs. Every stave and every vertebrae can be adjusted to follow scoliosis cases.



Soft and breathable

to maximize the comfort of the backrest. The spaces between the pads helps to keep the back of the user dry. Each pad is made of washable foam with breathable technical material for maximal comfort.

stealthproducts.com

United States

104 John Kelly Dr. • Burnet, TX 78611
(800)976-9229 • (512)715-9995
info@stealthproducts.com

Canada - Distributed by Pride Mobility Products CA

5096 South Service Road • Beamsville • ON • LOR 1B3
(888)570-1113 • (866)514-1303 Fax
info@stealthproducts.com