





## Made for Simplicity

One of the main focus of the UniLink system is simplicity, and this is accomplished with the following points:

- Most adjustments can be accomplished with one tool, a 4mm hex wrench.
- All systems use same link structure in three (3) size options: 1 1/2in (3.81cm), 2in (5.08cm) and 3in (7.62cm).
- All elements are compatible with one another.

**4 TIMES** the holding  
**POWER**



**UniLink**  
**1 SYSTEM**  
**FITS ALL**



**REVOLUTIONARY**  
**MOUNTING SYSTEM**

## Built to Hold

UniLink allows for near limitless positioning of components with improved strength over TWB. UniLink uses a similar compression technology as its predecessor.

UniLink provides four times the strength of the current TWB family of products. UniLink joints compose of steel inserts can hold up to 102 ft-lbs before moving, and each joint can rotate up to 258°.

## Designed as an Unified Ecosystem

UniLink began as an improvement to the current TWB family of products. The goal is to simplify the line and use one link for everything. During this project the past issues of TWB are being addressed.

## Revolutionary Mounting System

Hence its brand name, the UniLink simplifies the component system by using one link configuration for everything. Every part integrates perfectly with one another giving the opportunity to better understand it, apply it and consider it for other implementations. Either as a pelvic solution or any other solution, each of it's components are interchangeable.



# Table of Content

|                                     |   |
|-------------------------------------|---|
| ■ Pelvic/Thigh Hardware .....       | 6 |
| ■ Modifications .....               | 7 |
| ■ & Mounting Options .....          | 7 |
| ■ Pelvic/Thigh Pad Options .....    | 8 |
| ■ Pelvic/Thigh Pad Comparison ..... | 9 |

---

|                                  |    |
|----------------------------------|----|
| ■ Trunk (Lateral) Hardware ..... | 11 |
| ■ Thoracic Pad Options .....     | 13 |
| ■ Gel Properties.....            | 14 |
| ■ Mounting.....                  | 15 |
| ■ Options.....                   | 15 |
| ■ OEM Trunk .....                | 16 |
| ■ Mounting Options.....          | 16 |
| ■ All Season Brackets.....       | 17 |

---

|                              |    |
|------------------------------|----|
| ■ Elbow Stop Options .....   | 19 |
| ■ Custom Configuration ..... | 20 |
| ■ Elbow Stop .....           | 21 |
| ■ Pad Options .....          | 21 |

|                                       |    |
|---------------------------------------|----|
| ■ Head Solutions .....                | 23 |
| ■ Head Solutions Hardware .....       | 24 |
| ■ Head Solutions Headrest Pad .....   | 25 |
| ■ Head Solutions Ultra Hardware ..... | 26 |
| ■ Head Solutions Ultra Pads .....     | 27 |

---

|                                    |    |
|------------------------------------|----|
| ■ Other Head Solution Options..... | 28 |
| ■ Swing Away Receiver .....        | 29 |

---

|                               |    |
|-------------------------------|----|
| ■ UniLink Kit.....            | 31 |
| ■ UniLink Kit Breakdown ..... | 32 |

---

|                                |    |
|--------------------------------|----|
| ■ Adapter Plate.....           | 33 |
| ■ Adapter Plate HD .....       | 34 |
| ■ Configurable Interface ..... | 35 |
| ■ Highly Adjustable .....      | 36 |
| ■ Highly Compatible .....      | 37 |
| ■ Comparison Table.....        | 38 |
| ■ Adapter Plate Options.....   | 38 |





# **Pelvic Solutions Hardware**

# Pelvic/Thigh Hardware

**Traditional Long**  
UTS25300-L  
UTS25300-R

**Standard Traditional**  
UTS25100-L  
UTS25100-R

## Multi-Angle

5in Stave (Short)  
UTT7A116O2-L  
UTT7A116O2-R

7in Stave (Long)  
UTT6A116O2-L  
UTT6A116O2-R

## Fixed Standard

UTT23119O2-L  
UTT23119O2-R

## 90° Angle

UTTP5-Q 5in Stave (Short)  
UTTP7-Q 7in Stave (Long)





# Modifications & Mounting Options



**FSC  
Pad Mount**  
UTPFSI100



**All Season**  
UIMPBI090

**90° Mounting  
Brackets**



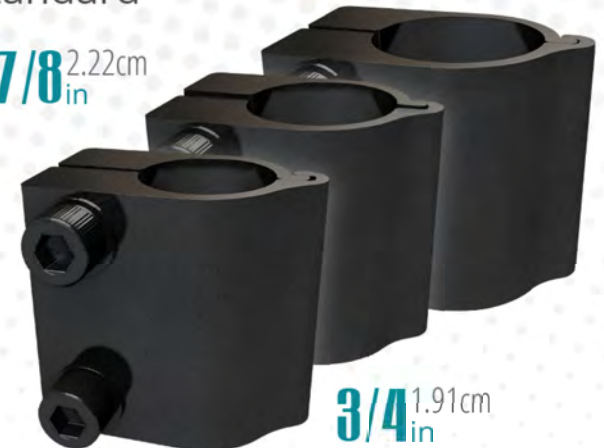
**Standard**  
UIMPBI090



**Cane Mounts**  
Standard

**7/8** 2.22cm  
in

**1** 2.54cm  
in



**3/4** 1.91cm  
in



# Pelvic/Thigh Pad Options



**4in x 4in**  
10.16cm x 10.16cm  
UTP544056100

**4in x 6in**  
10.16cm x 15.24cm  
UTP546056100

**4in x 8in**  
10.16cm x 20.32cm  
UTP548056100

powered by 



**4in x 10in**  
10.16cm x 25.40cm  
UTP540056100

**4in x 12in**  
10.16cm x 30.48cm  
UTP54D056100

## Traditional Style Pads

Neoprene Cover

Metric 2.54cm Hole Spacing



TRUE SIZE

**3in x 6in**  
7.62cm x 15.24cm  
UTP536056300

**4in x 4in**  
10.16cm x 10.16cm  
UTP544056300

**4in x 6in**  
10.16cm x 15.24cm  
UTP546056300

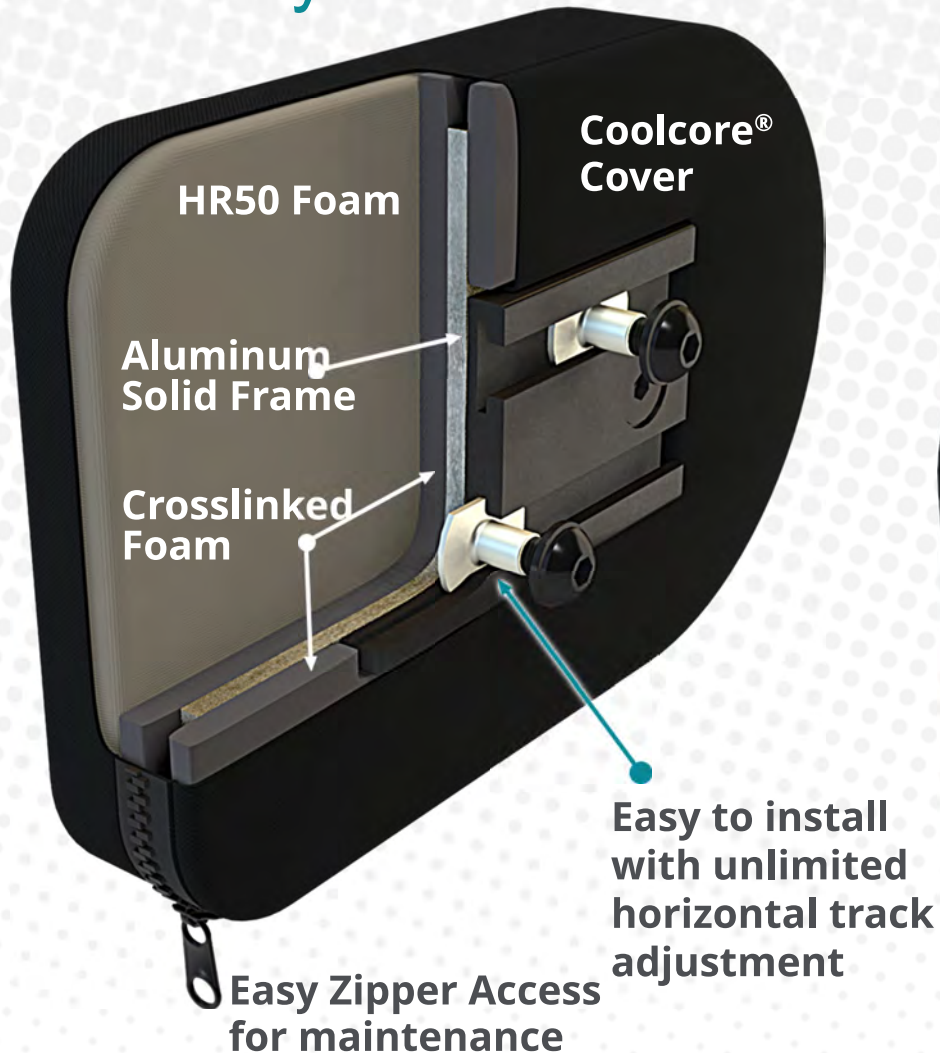
**4in x 8in**  
10.16cm x 20.32cm  
UTP548056300

**4in x 10in**  
10.16cm x 25.40cm  
UTP540056300

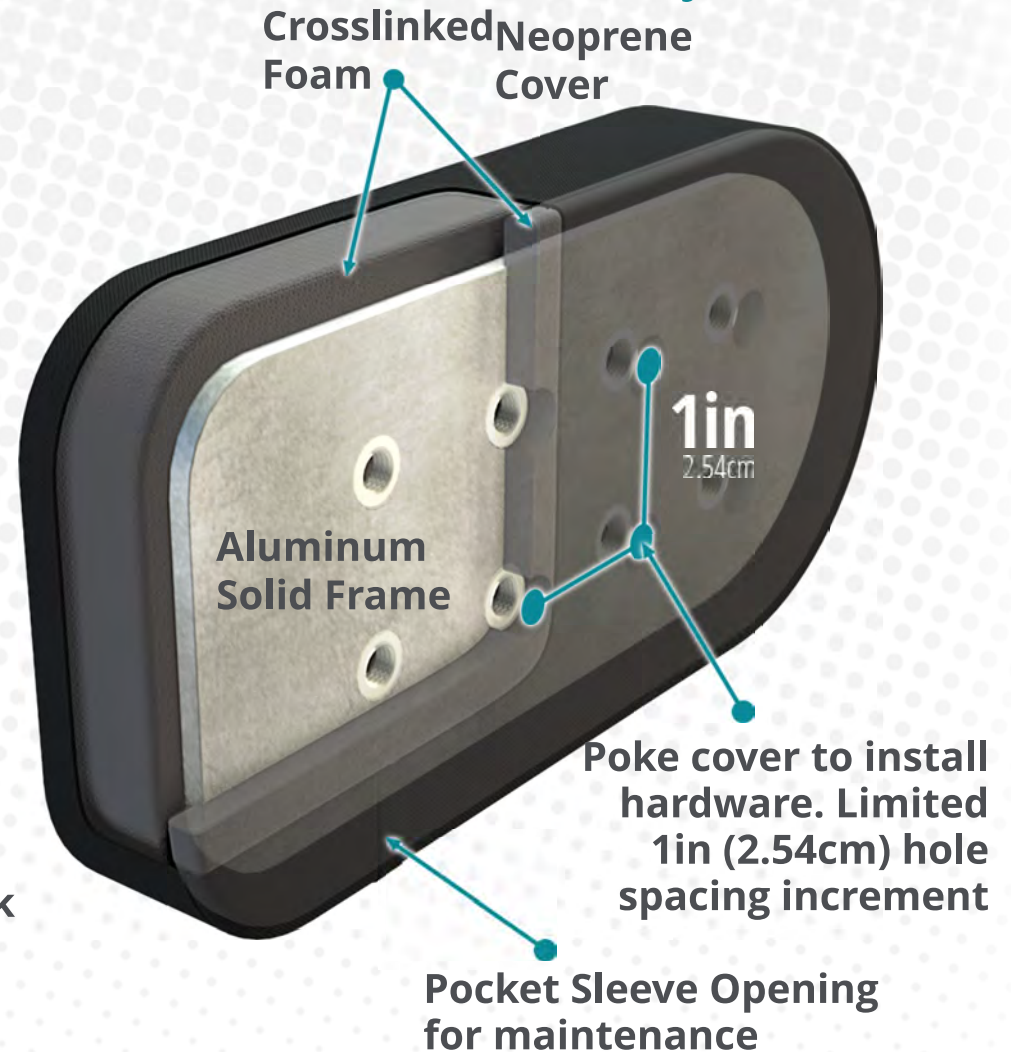
**4in x 12in**  
10.16cm x 30.48cm  
UTP54D056300

# Pelvic/Thigh Pad Comparison

## Track Style Pad



## Traditional Style Pad



With enough pressure aluminum frame can be bent to shape





# **Trunk Solutions Hardware**



# Trunk (Lateral) Hardware

## Swing-Away

### Short

ULS25000-L  
ULS25000-R

### Standard

ULS25100-L  
ULS25100-R

### Inline

ULS05100-L  
ULS05100-R

## Fixed

### Short

ULS23200-L  
ULS23200-R

### Standard

ULS23210-L  
ULS23210-R



# FSC

Full Surface Contact

**360°** Adjustable  
Angles

## Inline Flip-Away

ULS0510F-L

ULS0510F-R

## Short Flip-Away

ULS2500F-L

ULS2500F-R

## Short Fixed

ULS2320F-L

ULS2320F-R

## Standard Flip-Away

ULS2510F-L

ULS2510F-R

## Standard Fixed

ULS2321F-L

ULS2321F-R



ULPFSI100



# Thoracic Pad Options

**3in x 5in**

7.62cm x 12.70cm

ULP535050320

ULP535057120 *gel*

**4in x 6in**

10.16cm x 15.24cm

ULP546050320

ULP546057120 *gel*

**5in x 7in**

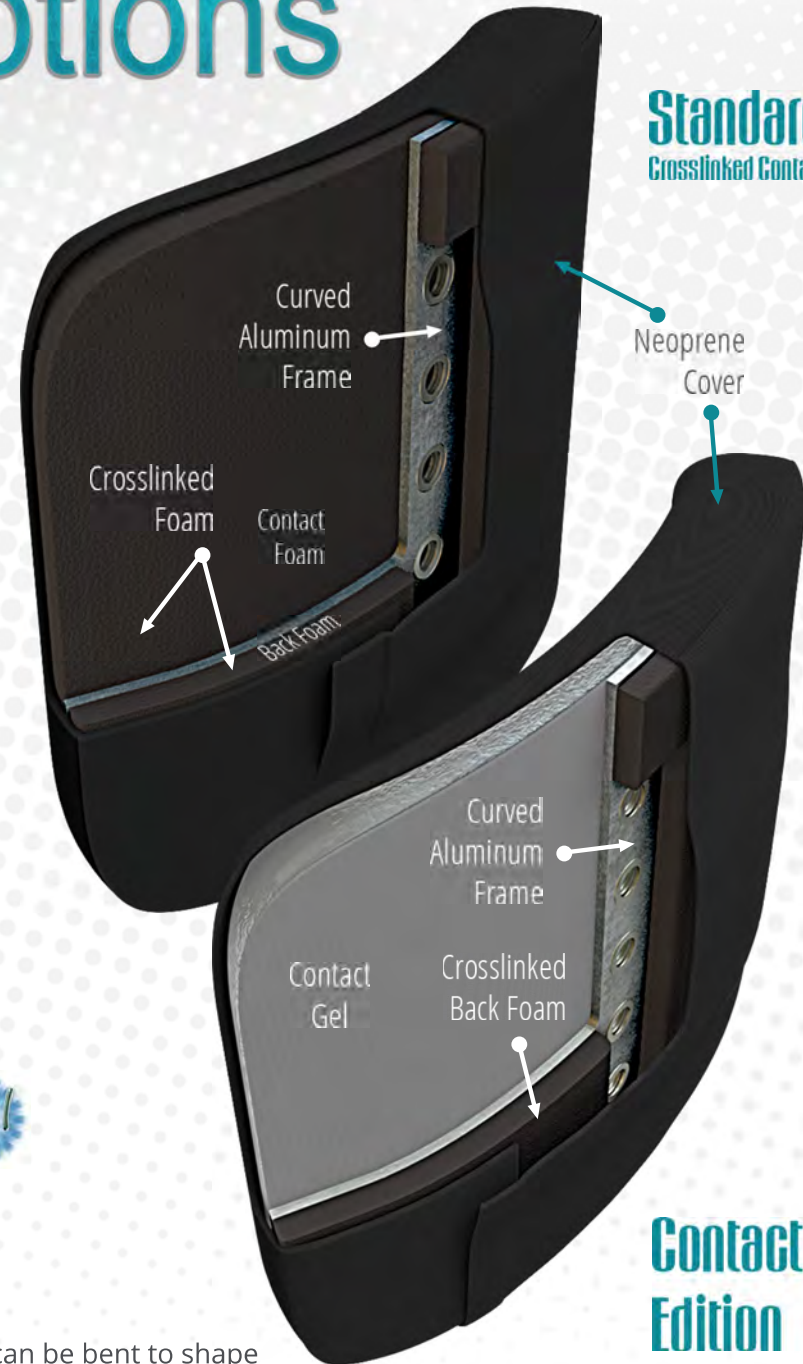
10.16cm x 15.24cm

ULP557050320

ULP557057120 *gel*

**Standard**

Crosslinked Contact Foam



**Contact Gel  
Edition**

With enough pressure aluminum frame can be bent to shape



# Gel Properties

**Non-Toxic**  
if consumed

**Maintain Consistency**  
on temperatures  
under 200°F (93°C)

**Does Not Bottom Out**  
when weight is applied

**Passed Flammability Testing**  
per RESNA WC-1  
and international requirements

**No Harmful Chemicals**  
passes CAL Prop 65, REACH and RoHS

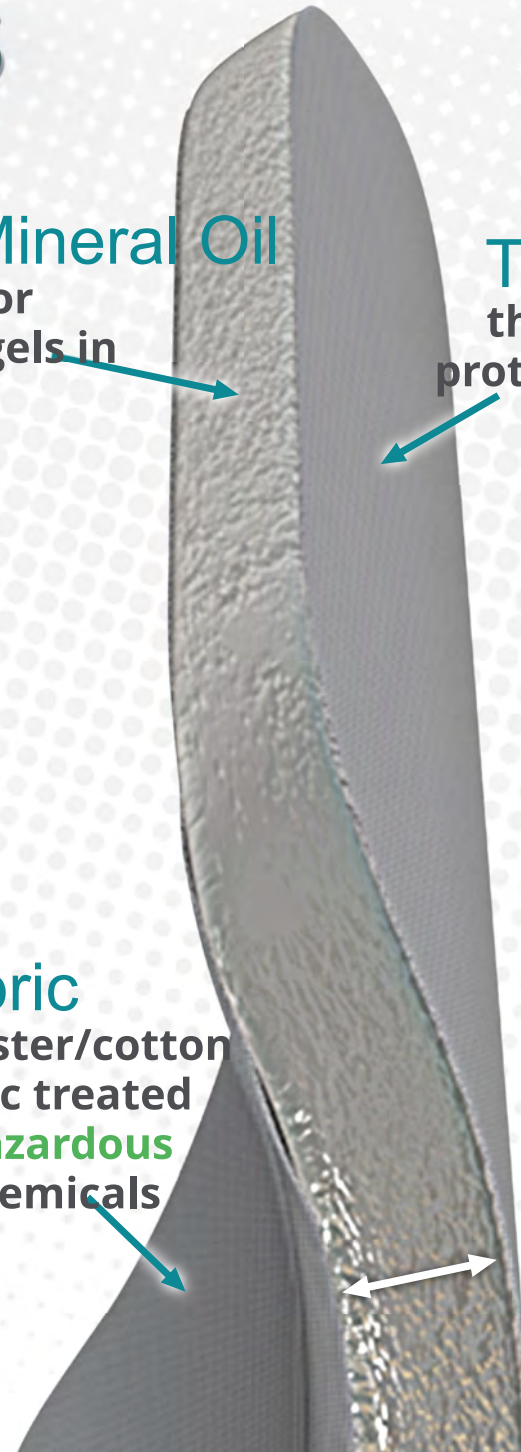
**Safe for the Environment**  
is a green recyclable material

**Glycerin Mineral Oil**  
little to no odor  
compared to gels in  
the market

**Twill Fabric**  
thin fabric coat  
protecting the gel  
both sides

**Twill Fabric**  
65/35 polyester/cotton  
woven fabric treated  
with **non-hazardous**  
dyes and chemicals

**1/2in**  
(1.27cm)



# Mounting Options

Cane Mounts

Brackets

Cane Mounts  
Standard

$\frac{7}{8}$  2.22cm  
in

1 2.54cm  
in

Crescent

$\frac{7}{8}$  2.22cm  
in

1 2.54cm  
in

125°

105°

90°

48°

135°

Mounting  
Brackets

$\frac{3}{4}$  1.91cm  
in



**permobil**

Corpus 3G UIMBKIP3G



QUANTUM REHAB®



UIMBKITB4 **TB4**



**TB3**  
UIMBKITB3

OEM Trunk  
Mounting Options



# All Season Brackets

Tool Free on-demand width adaptable bracket



UIMASI090  
**Planar**

90°



**Angled**  
for curved surfaces

80°



UIMASI075

75°



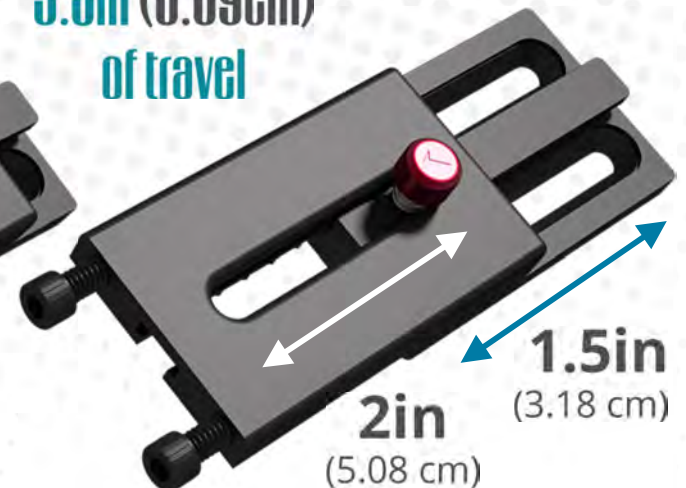
UIMASI070

70°



**UniLink**  
**Adapter Plate**  
ADP04

Up to  
**3.5in (8.89cm)**  
of travel



**2in**  
(5.08 cm)

**1.5in**  
(3.18 cm)



# **Upper Extremities Hardware**



# Elbow Stop Options

Flip-Away ES  
Link Assembly

UE000213SL  
UE000213SR

Flip-Away

UETB4213SL-Q  
UETB4213SR-Q

Fixed ES  
Link Assembly

UE000021F0



Fixed

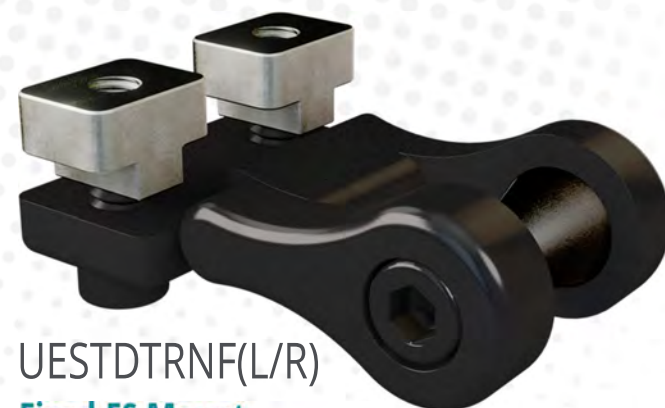
UETB4021FL-Q  
UETB4021FR-Q

permobil  
Corpus 3G



UEPRMTRNF(L/R)

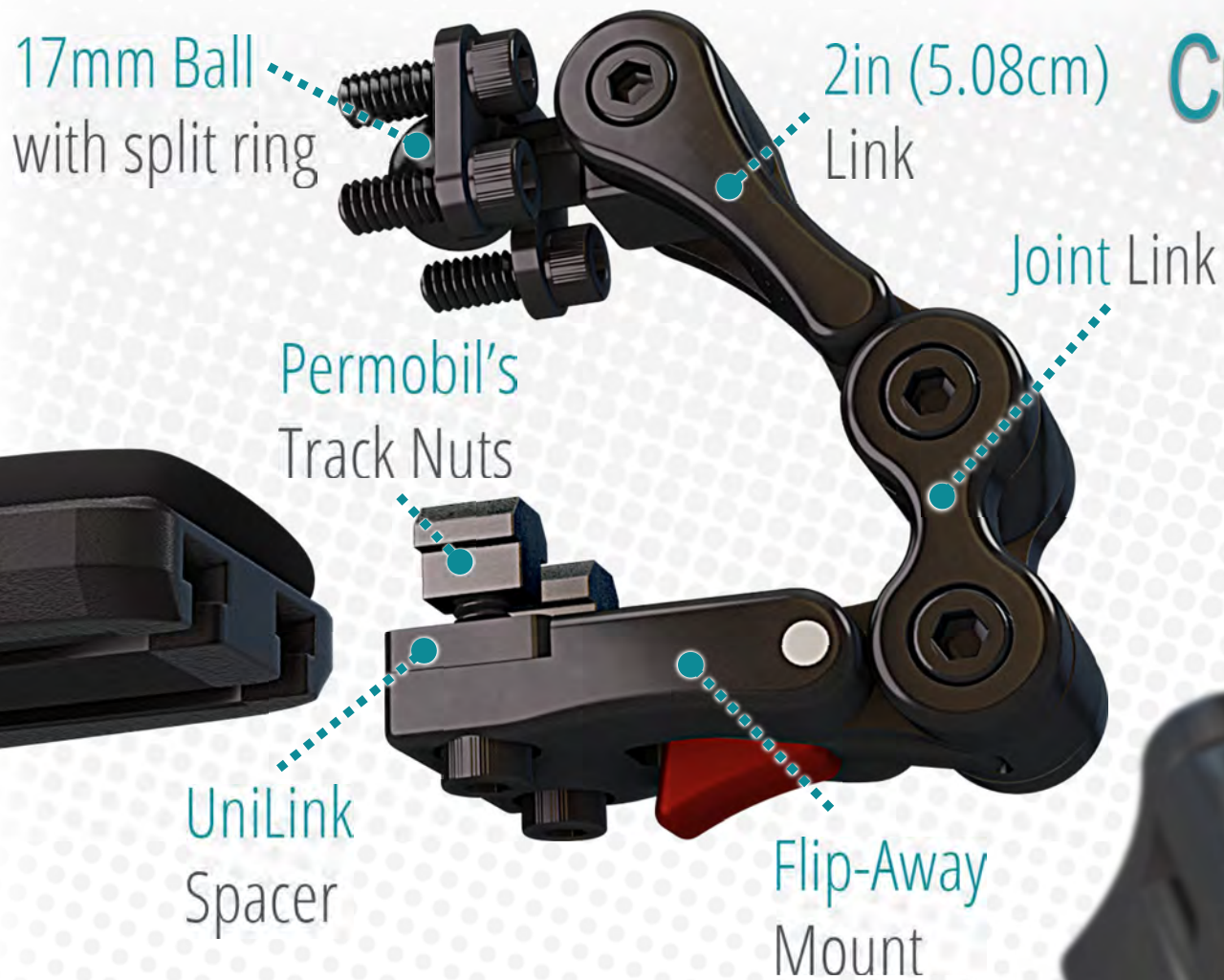
Fixed ES Mount  
with Permobil Track Nuts



UESTDTRNF(L/R)

Fixed ES Mount  
with Standard Track Nuts





## Custom Configuration

All UniLink's components are compatible with one another allowing the ability to put together a configuration that better accomplishes a desired functionality.

The UniLink ES has been designed for a clean install at the back of a dual tracked armrest similar to the Quantum Flip-Back and Permobil Corpus 3G.



# Elbow Stop Pad Options

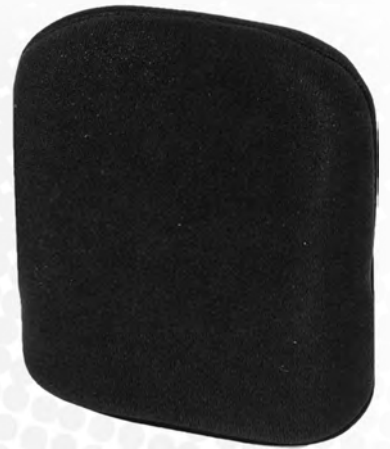
**3in x 3in**

7.62cm x 7.62cm

UEP533050320



UEP533057120



**Contoured Pad**  
**3in x 10in**  
7.62cm x 25.40cm

UEP53005032L

UEP53005032R



UEP544050320

UEP544057120

**4in x 4in**

10.16cm x 10.16cm



UEP53005712L

UEP53005712R





# **Head Solutions Hardware**



# Head Solutions

17mm  
Ball Link



SU Split Ring

Comes included with Hardware

3in Links  
7.62cm

258°



Comfort Plus v.2 Powered by coolcore

6in (15.24cm)  
CP06CCFPM

10in (25.40cm)  
CP10CCFPM

8in (20.32cm)  
CP08CCFPM

14in (35.56cm)  
CP14CCFPM



# Head Solutions Hardware





# Head Solutions Headrest Pad

Dimension are approximated



6 1/4in Wide  
(15.87cm)

9 9/16in Wide  
(24.25cm)

11 7/32in Wide  
(28.51cm)

14 5/32in Wide  
(35.94cm)

CUSTOM up to 20" Wide  
(50.8cm)



CP06CCFPM

CP08CCFPM

CP10CCFPM

CP14CCFPM

CP-CUSFPM

4 1/4in Height  
(10.76cm)

5 3/4in Height  
(14.60cm)

5 3/4in Height  
(14.60cm)

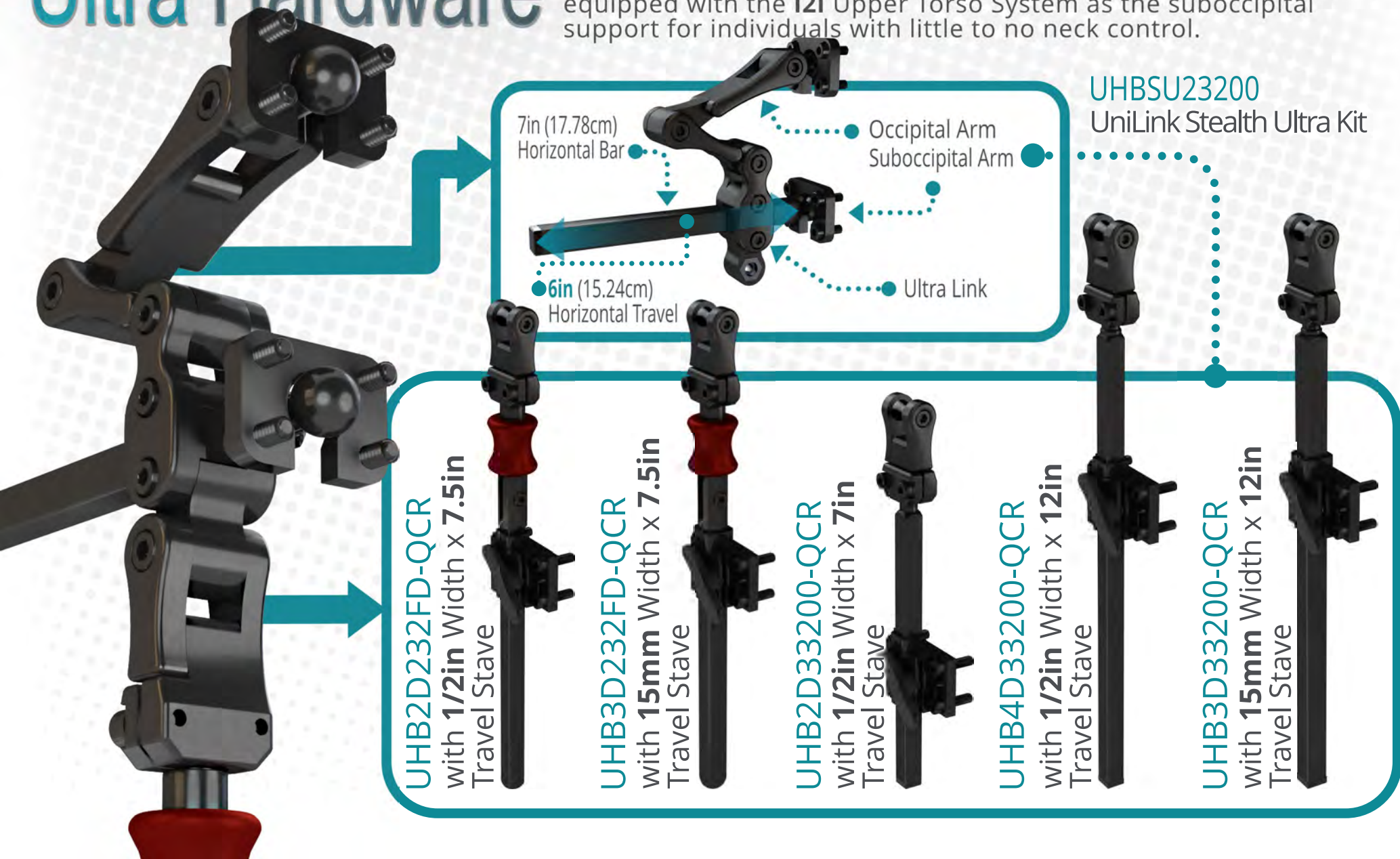
5 3/4in Height  
(14.60cm)

Up To 6in Height  
(15.24cm)



# Head Solutions Ultra Hardware

The **UniLink** Ultra provides occipital and suboccipital support, which can be adjusted independently from each other. The occipital pad provides a more traditional support to the occiput (back of head). The suboccipital pad is positioned right between the back of the head and the top back portion of the neck. This setup provides extra support and positioning for individuals with limited neck control. For a more complex positioning solution, the **Ultra** hardware can be equipped with the **i2i** Upper Torso System as the suboccipital support for individuals with little to no neck control.





# Head Solutions Ultra Pads

Stealth Ultra pads are designed to work as a aftermarket set of options. Keep in mind that the Ultra Hardware is compatible with all 17mm ball style Head Solution Pads. **For suboccipital the i2i could be used for a more advanced positioning solution.**



## Occipital



**530M**  
Curved 4x2  
4in x 2 1/2in  
(10.16cm x 6.35cm)



**520M**  
Curved 4x3  
4in x 3 1/4in  
(10.16cm x 7.62cm)



**510M**  
Flat 5x2  
5in x 2in  
(12.70cm x 5.08cm)



**500M**  
Curved 7x4  
7 1/4in x 4 1/4in  
(18.42cm x 10.80cm)

## Suboccipital



**610M**  
Niño (Pediatric)  
6 3/8in x 2 1/4in  
(16.19cm x 5.71cm)



**600M**  
Standard  
8 1/2in x 2 3/4in  
(21.59cm x 6.99cm)



**620M**  
Extra Large  
10 1/2in x 2 3/4in  
(26.67cm x 6.99cm)

# Other Head Solution Options



i2i



The i2i head positioning system stimulates proper posture for the head, neck and upper torso with a unique shape. Can be used as a suboccipital pad in the UniLink Ultra System.



CB

**Combo**

The Combo offers a good positioning solution in a small profile and easy on demand adjustments.



ACP



**Adjustable Comfort Plus**

The Adjustable Comfort Plus (ACP) combines all the features of the Comfort Plus with an adjustable triple pad head support that is designed to supply a resting position, or support against gravity in tilt and recline.

**Tri-Comfort Plus**



TCP



The Tri Comfort Plus expands the features of the Comfort Plus with the addition of angled lateral wings and a clinically based choice of length and heights. Functions as similarly to the ACP, but its laterals are fixed.



AP

**All Positioning**

The All Positioning (AP) has a unique combination of features that result in an anatomically shaped support. It provides the functions of a headrest as well as comprehensive head positioning system. The shell can be mold to head shape.



# Swing Away Receiver

Our swing away receiver support temporal pads for lateral support, switches for access to external assistive technology devices, or even a chin joystick.



There is a lot more you can do...

check the Swing Away  
website for more information





what will you  
**build** next?



# UniLink Kit

We have many other solutions that can be tackled with UniLink. For example, the UniLink Kit will come with one of each pre-assemblies as well as a tackle box of spare parts.

This kit is designed so that using the parts inside, one could build unique components or repair damaged items.



UniLink Kit Bag UNILINK-KIT-1  
Limited Camo Pattern Edition



# UniLink Kit Breakdown

Tackle Box Items



## UniLink KIT

PRE-CONFIGURED BACK PACK ITEMS



Tackle Box Content

UniLink Pre-Configured Systems



**SIMPLE  
SOLUTIONS**

# Adapter Plate

Fits backs 10 to 22in (25.40 to 55.88cm) wide

Quantum Series



General Series



QUANTUM REHAB®

works with  
TRU-Balance® 3 & 4

**Available for:**  
**Permobil® 3G, Rovi® & Merits®**

**SIMPLE  
SOLUTIONS**

# Adapter Plate HD

Fits backs from 10 to 32in (25.40 to 81.28cm)



works with  
**TRU-Balance® 3, 3-HD & 4**

Heavy-duty construction to meet  
higher load requirements than the  
original Simple Solution Adapter



# Configurable Interface

Compatible with  
UniLink™ System



▲  
4 Point  
Configuration



▲  
Center Point  
Configuration



▲  
Wide Reach  
Configuration



Minimal total seat depth loss



# Highly Adjustable

**Adapter  
Lock Lever** ▶  
TB4 SERIES ONLY

**3 7/8in**  
(9.84cm)

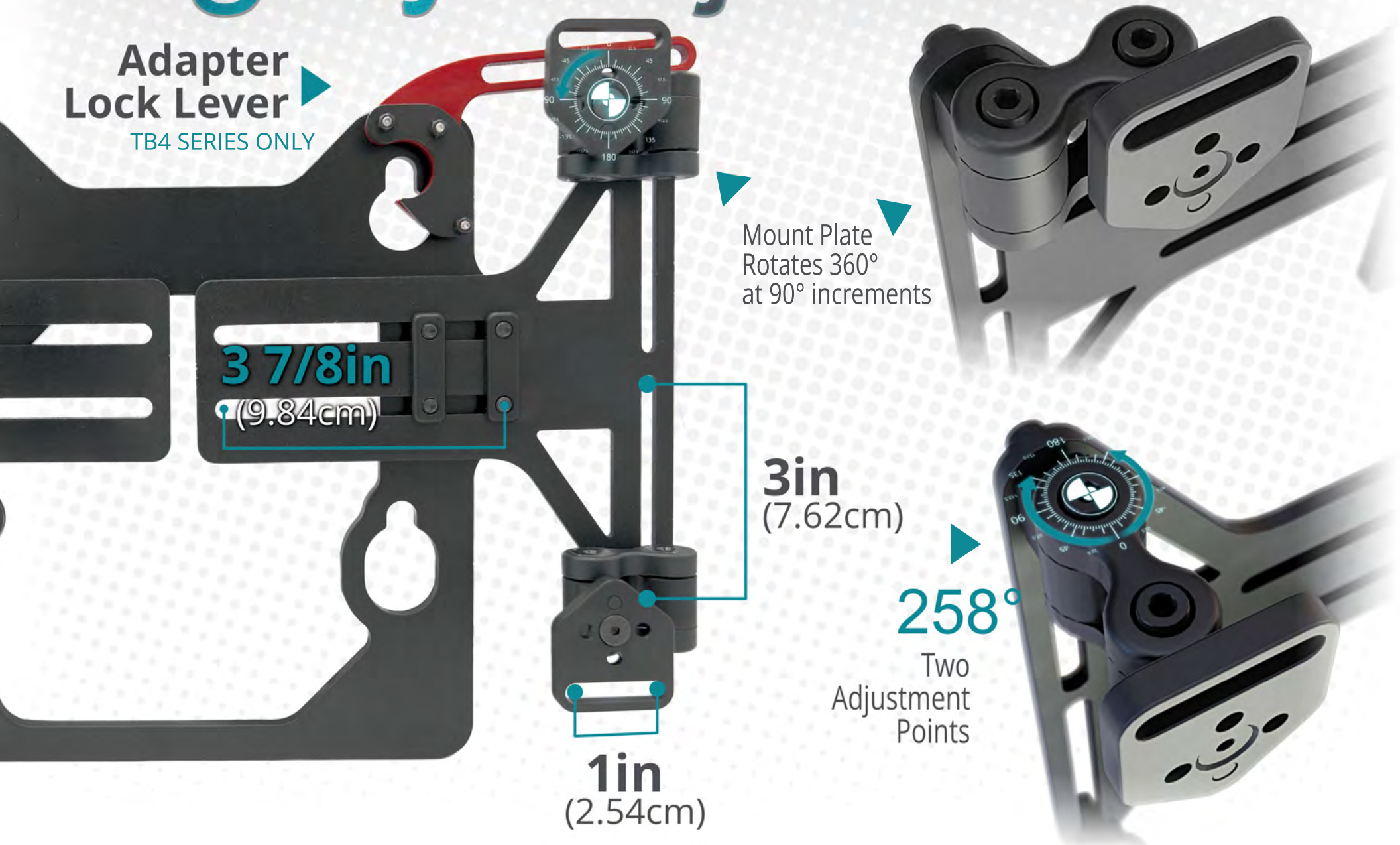
Mount Plate  
Rotates 360°  
at 90° increments

**3in**  
(7.62cm)

**258°**

Two  
Adjustment  
Points

**1in**  
(2.54cm)



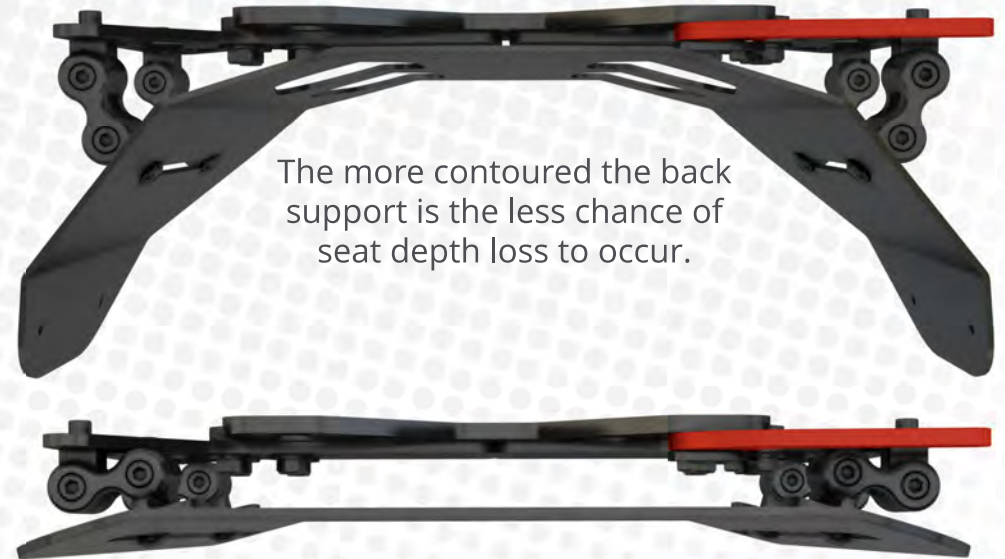


# Highly Compatible

Stealth's  
TFB R-Back  
on a Quantum  
Edge® 3



## ADI ALBR16SD Support



The more contoured the back support is the less chance of seat depth loss to occur.

## TFB R-Back 14in Support

Compatible with, but not limited to:

- Stealth Products' TFB, ADI and Q-Back backs
- Matrx®
- Jay® J3®
- Comfort Company Acta-Back® / Acta-Embrace™ Series
- Roho® Agility® Aluminum Series
- Ride® Java® & Custom



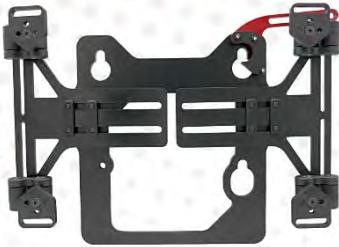
# Comparison Table

|                              | SSAPTB4                  |              |                 | -HD                | SSAPGEN                        |              |                 |
|------------------------------|--------------------------|--------------|-----------------|--------------------|--------------------------------|--------------|-----------------|
|                              | SSAPTB4                  | SSAPTB4-PED  | SSAPTB4-TRT     | SSAPTB4-HD         | SSAPGEN                        | SSAPGEN-PED  | SSAPGEN-TRT     |
| <b>Chair Compatibility</b>   | Quantum Rehab® TB3 / TB4 |              |                 | TB3 / TB3-HD / TB4 | Permobil® 3G / Rovi® / Merits® |              |                 |
| <b>Back Compatibility</b>    | > ≈15in wide             | < ≈15in wide | Tarta® Original | Universal          | > ≈15in wide                   | < ≈15in wide | Tarta® Original |
| <b>Removable Hardware</b>    | Yes                      |              |                 | No                 |                                |              |                 |
| <b>Lightweight</b>           | 2lbs 11oz                | 2lbs 7oz     |                 | 4lbs 6oz           | 2lbs 12oz                      | 2lbs 8oz     |                 |
| <b>Max Weight</b>            | 350lbs                   | 175lbs       | 220lbs          | 450lbs             | 350lbs                         | 175lbs       | 220lbs          |
| <b>UniLink Compatible</b>    | Yes                      |              |                 |                    |                                |              |                 |
| <b>Bi-Angular Compatible</b> | No                       |              |                 | Yes                | No                             |              |                 |

SSAPTB4-PED



SSAPTB4



## Adapter Plate Options

SSAPTB4-HD



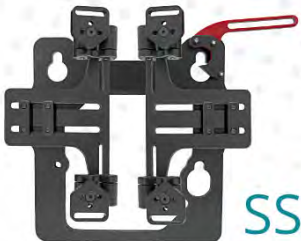
SSAPGEN



SSAPGEN-PED



SSAPTB4-TRT



SSAPGEN-TRT





**4 TIMES** the holding  
**POWER**



4 mm

Steel Insert

258°  
Adjustment

Light Aluminum

Steel Insert





# Unilink™ 1 SYSTEM FITS ALL





## REVOLUTIONARY MOUNTING SYSTEM

Distributed By:

Pride Mobility Products  
5096 South Service Road, Beamsville, ON L0R 1B3  
quantumrehab.ca • 1 (888) 570-1113

<https://unilink.stealthproducts.com>  
[information@sw.stealthproducts.com](mailto:information@sw.stealthproducts.com)  
104 John Kelly Drive, Building A, Burnet, TX 78611  
+1 (800) 965-9229 • +1 (512) 715-9995