

KIT168289 - Q6 Edge 2.0, 8" Caster Arm Replacement



QUANTUM

If you require any assistance with these instructions, please call Quantum Technical Service at 1-877-800-1248. Canada providers, call 1-888-570-1113.



WARNING! The retrofit kit should be installed by only an authorized service technician.



WARNING! Prior to performing any action to the Power Chair, ensure the power is turned off at the joystick and the base is in drive mode.

Tools required (not provided):

Metric Hex Key Set

Metric Hex Key Socket Set (recommended)

Torque Wrench

Metric Socket Set

Metric Wrench Set

Rubber Mallet

Sandpaper

Kit Contents (provided):

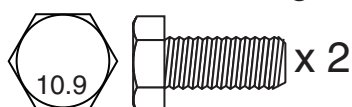
Left Front and Rear Caster Arm Assemblies

Right Front and Rear Caster Arm Assemblies

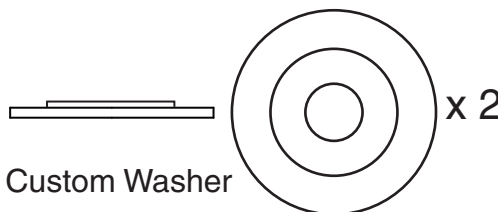
Left and Right Front Caster Assemblies

Left and Right Rear Caster Assemblies with Mounting Hardware

Front Caster Arm Mounting Hardware:

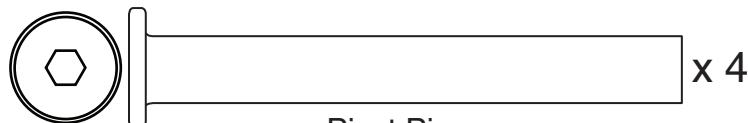


M8 x1.25 x 16mm,
Gr. 10.9, w/Patch

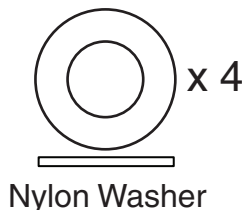


Custom Washer

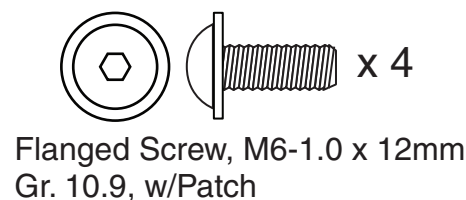
Front and Rear Strut Mounting Hardware:



Pivot Pin



Nylon Washer



Flanged Screw, M6-1.0 x 12mm
Gr. 10.9, w/Patch

*****The original caster arm assemblies must be returned to Pride Mobility in the individual shipping boxes.*****

The seating system components are not illustrated in this instruction for clarity.

www.quantumrehab.com

Rev A/July 2016

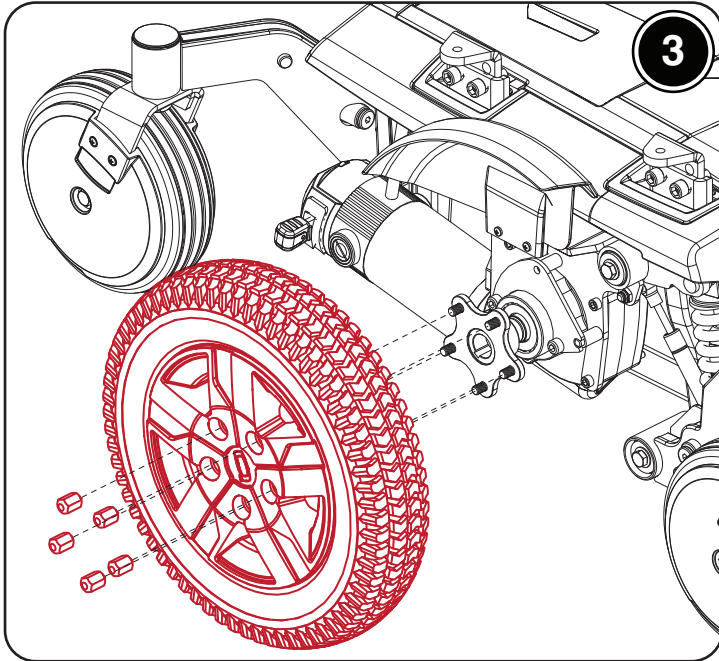
* I N F I NFB3543 *



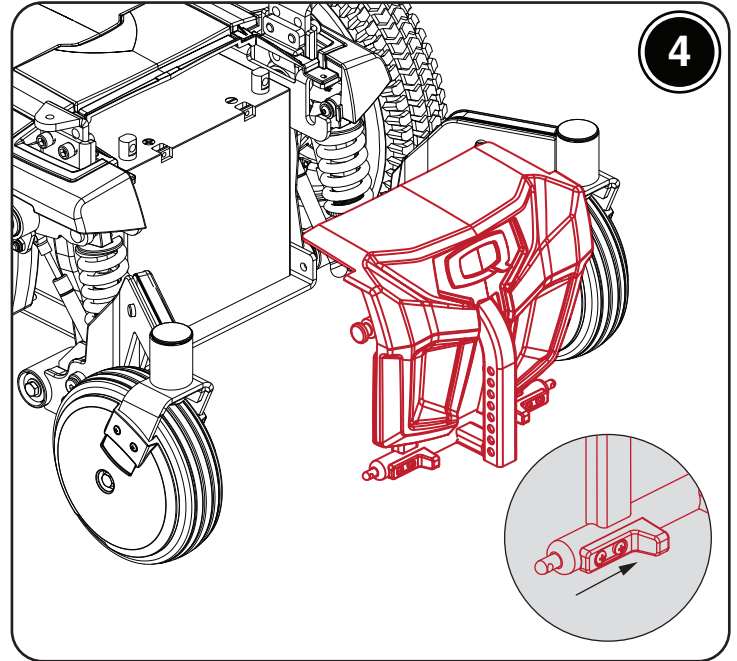
QUANTUM

1 Visual inspection should be completed prior to installation. If there are any concerns before or during installation, please contact technical service.

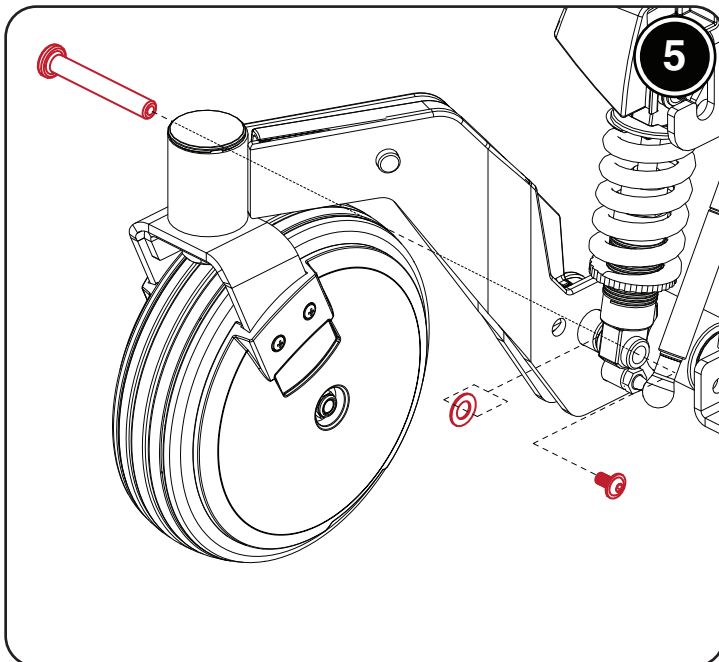
2 To ease replacement, elevate the unit by placing a block under the center of the frame.



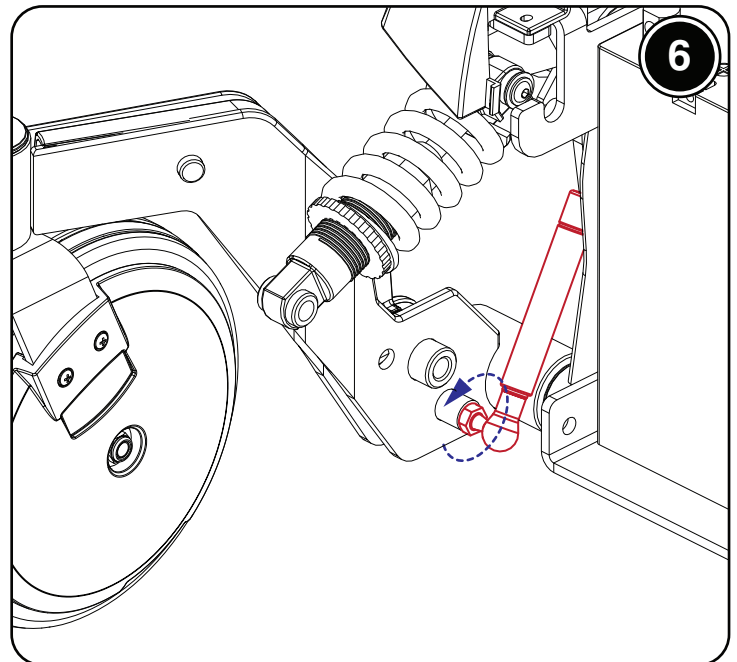
Remove and retain the drive wheels and lug nuts.



Remove the front battery shroud by squeezing the two triggers together then lifting the plate up and off of the frame.

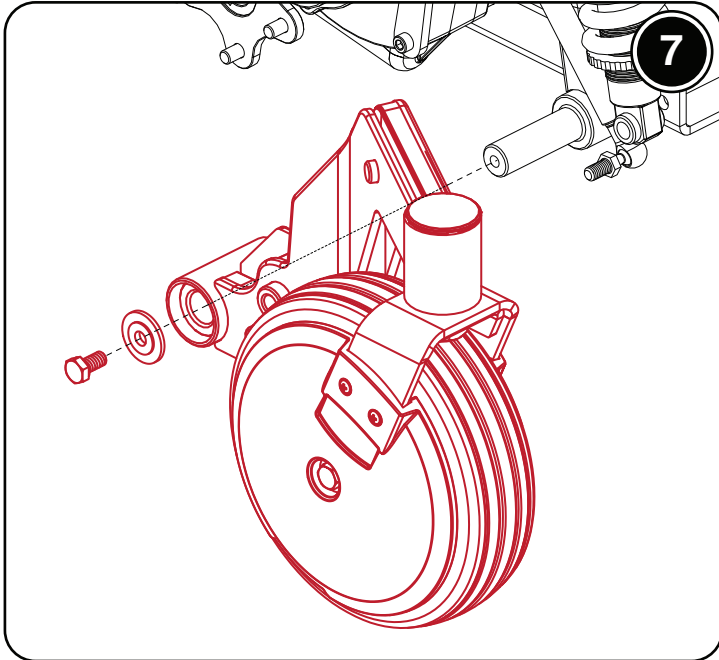


Remove and discard the lower strut hardware.

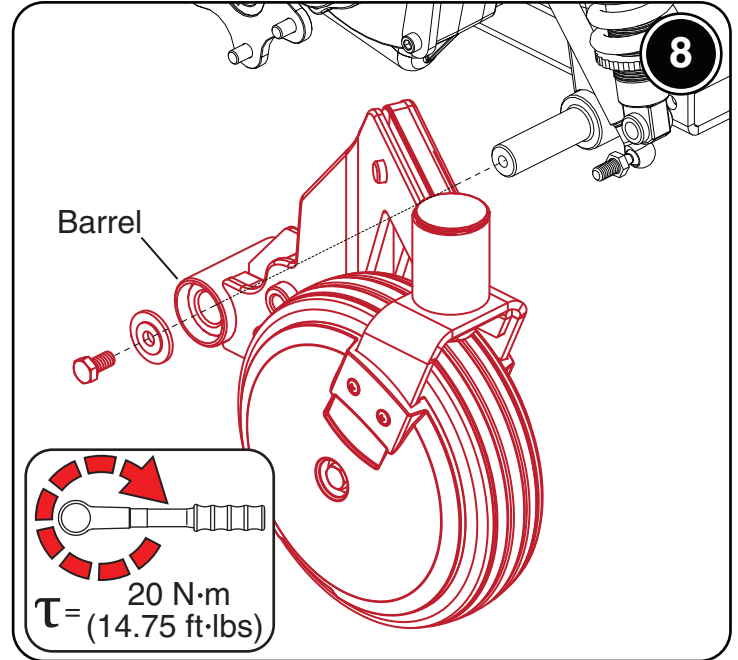


Unfasten the lower damper shock.

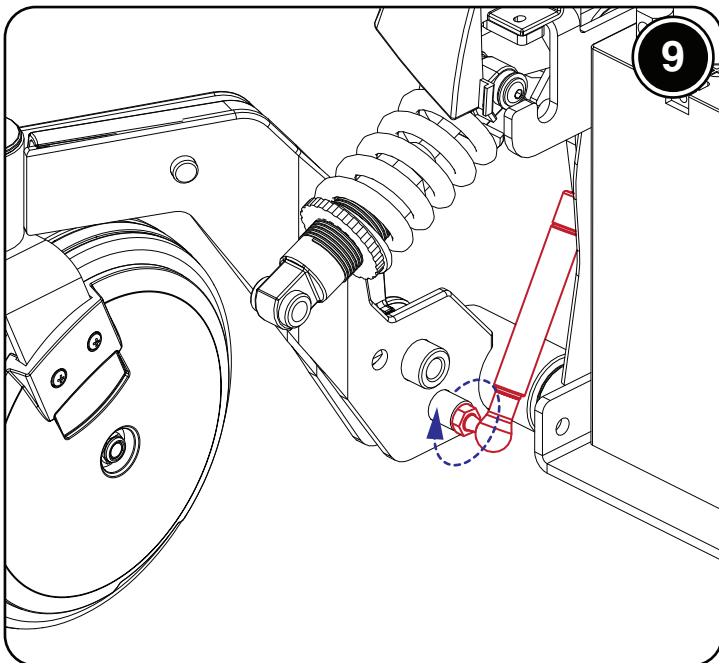
www.quantumrehab.com



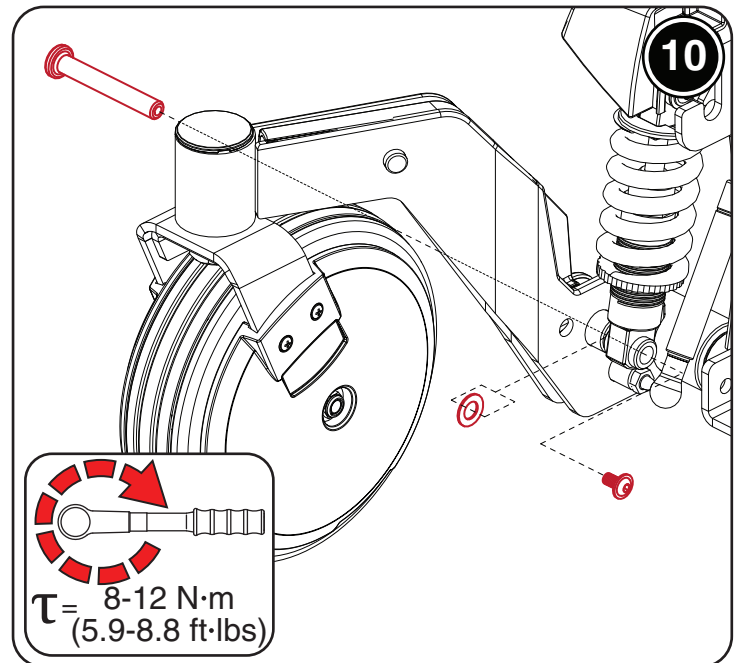
Remove and discard the hardware for the complete caster arm assembly. Repackage and place the caster arm in the shipping box.



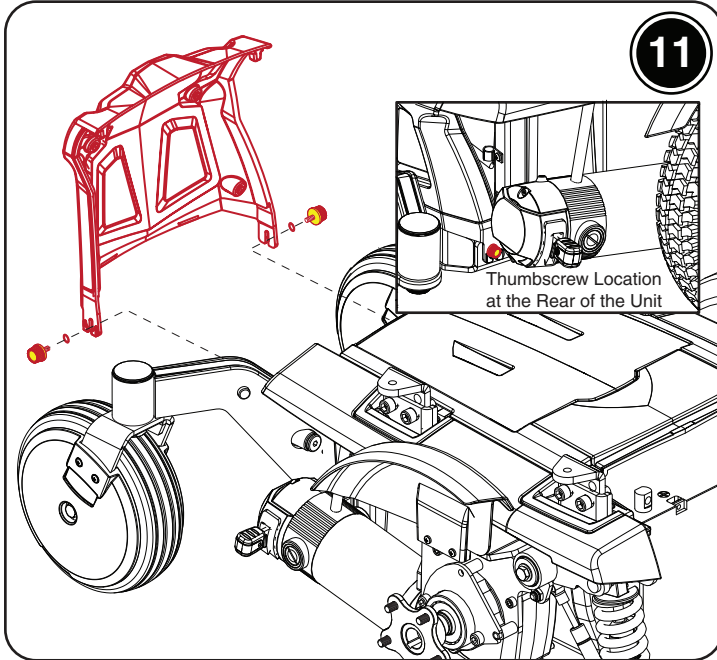
Attach the front caster arm onto the frame. Torque the supplied hardware to 20 N·m (14.75 ft·lbs). The assembly may need to be tapped into place with a rubber mallet. Sandpaper may need to be utilized to remove extra material from inside the barrel.



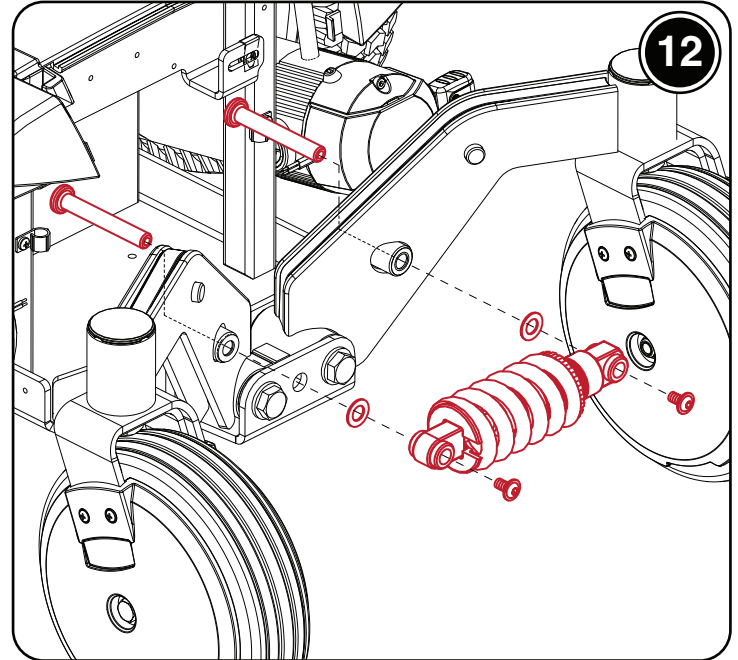
Reattach the damper shock to the caster arm.



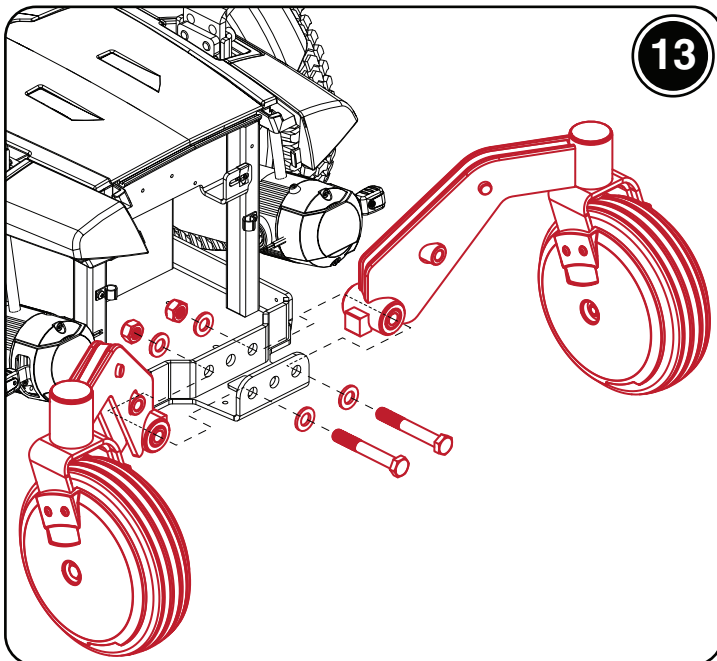
Reattach the lower strut onto the caster arm. Torque the supplied hardware to 8-12 N·m (5.9 - 8.8 ft·lbs). Repeat steps 5 through 10 to the opposite side. Replace the front battery door.



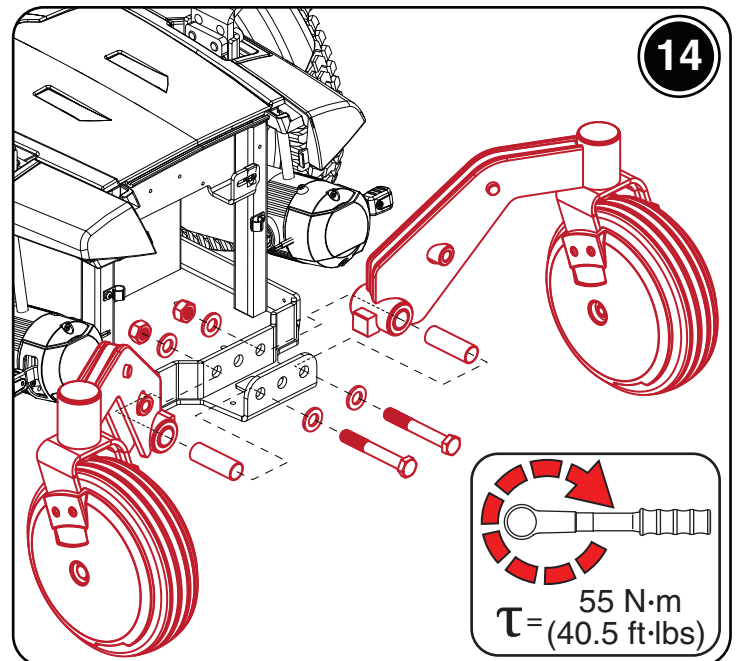
Disconnect all harnesses that route through the rear electronics cover. Loosen the 2 thumbscrews and remove the rear electronics cover.



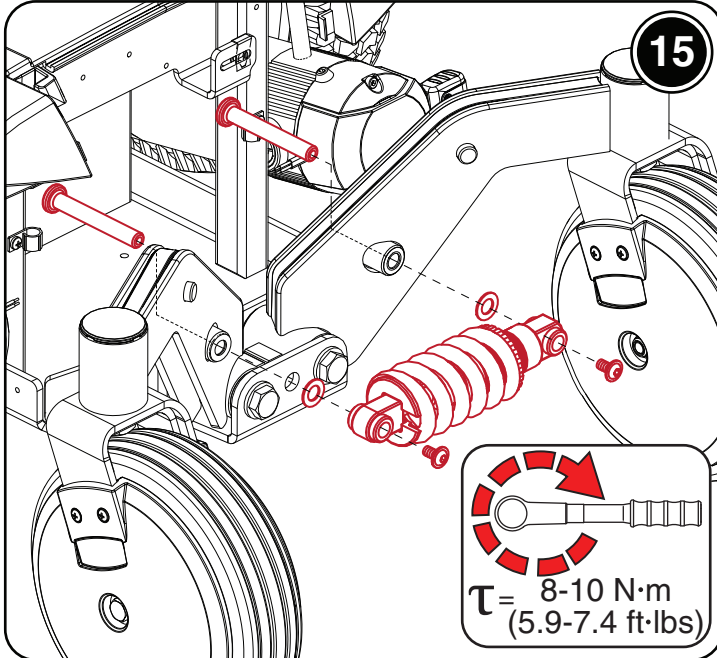
Remove the rear strut assembly. Discard the hardware.



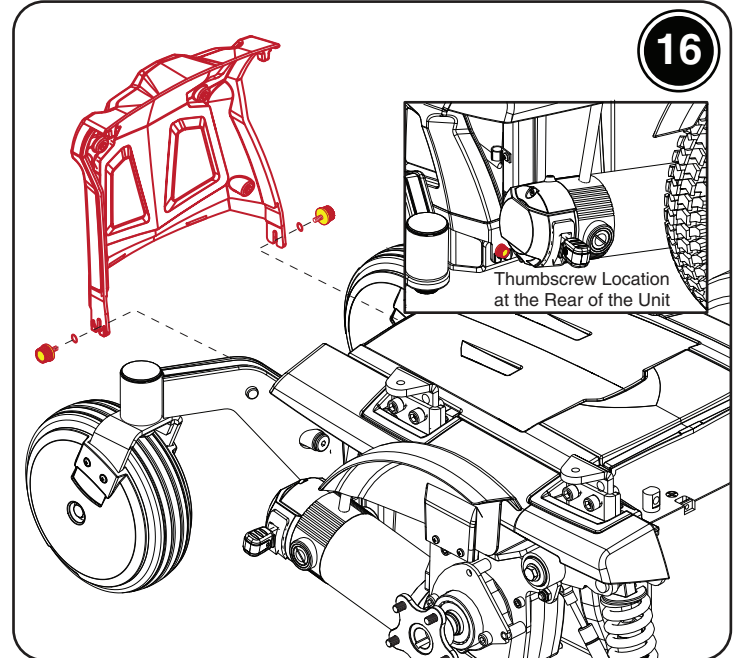
Remove and discard the caster arm mounting hardware. Remove the arms, repackage and place in the shipping box.



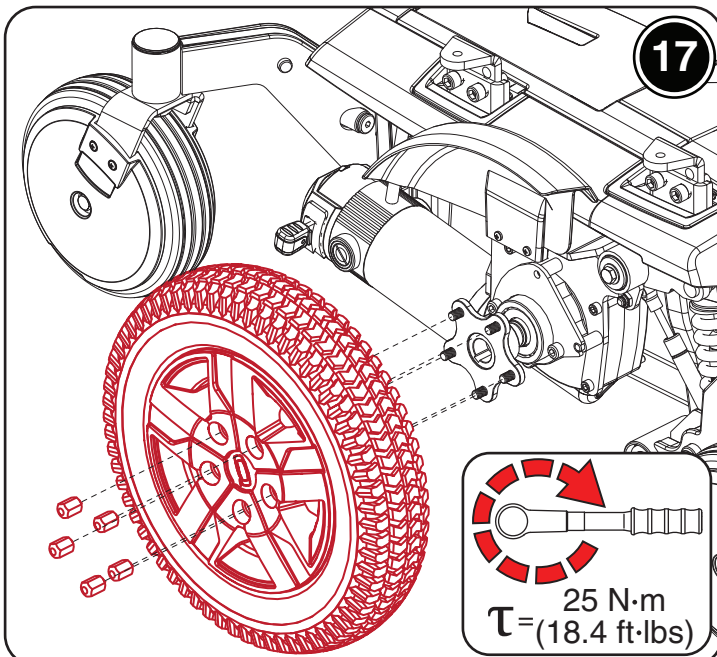
Attach the caster arms to the frame. Torque the supplied hardware to 55 N·m (40.5 ft·lbs).



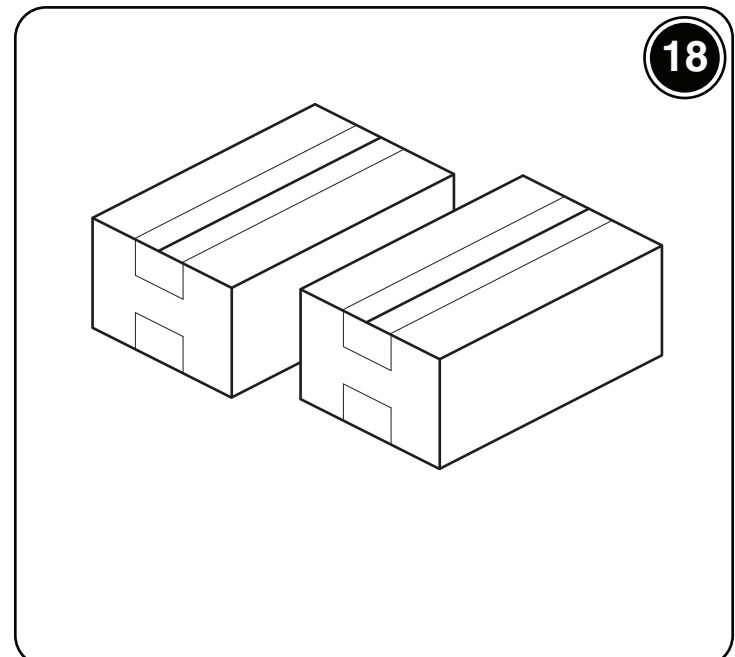
Reattach the rear strut assembly. Torque the supplied hardware to 8-10 N·m (5.9-7.4 ft·lbs).



Replace the rear electronics cover and reconnect all harnesses.



Reattach the drive wheels. Torque the lug nuts to 25 N·m (18.4 ft·lbs).



Return the packaged assemblies to Pride.